

**TIEFFE S.P.A.**

Via dell'Industria 7/11

CURA CARPIGNANO ( Pavia - Italy )

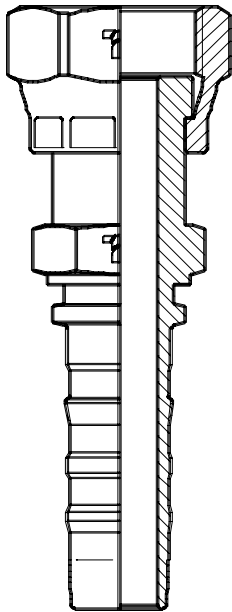
Tel: +39 0382 583020 Fax: +39 0382 483314

e-mail: [tieffe@tieffe.com](mailto:tieffe@tieffe.com)



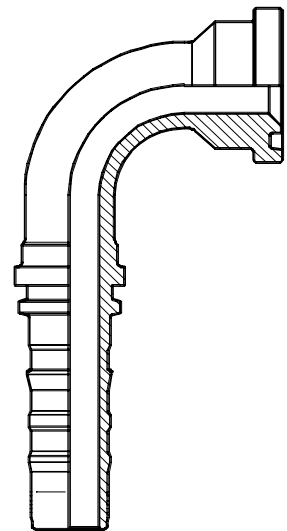
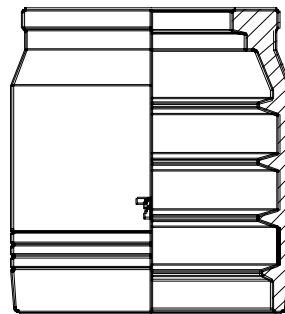
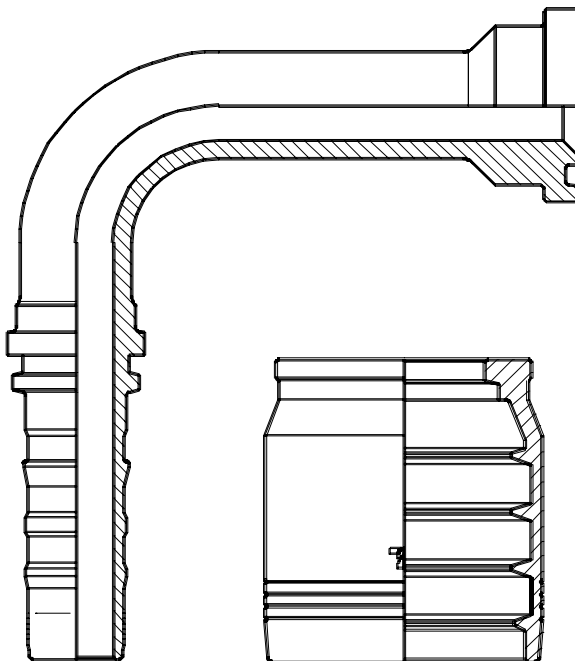
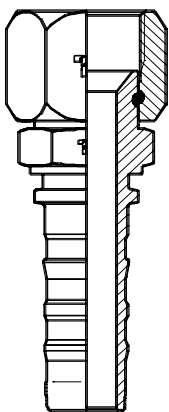
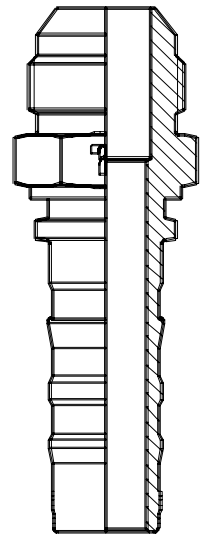
## "CS" SERIES CATALOGUE

### CATALOGO SERIE "CS"



## SPIRALLED HOSES CONNECTORS

## RACCORDI PER TUBI FLESSIBILI SPIRALATI



#### **Uncontrolled distribution document.**

We reserve the right to make, without notice, changes to any drawing or data shown in this document because of technical development or other reasons. Please notice that all the shown compatibilities and conformities are geometrical ones, they do not necessarily imply performances compatibilities and conformities. Contact Our Sales office for further information.

#### **Documento a distribuzione non controllata.**

*Tutti i disegni ed i dati dimensionali indicati in questa pubblicazione potranno essere variati senza alcun preavviso.*

*Tutte le informazioni fornite non costituiscono responsabilità per condizioni di utilizzo diverse da quelle suggerite, che pertanto vanno considerate soltanto come raccomandazioni.*

*Per eventuali chiarimenti interpellate il Ns. Ufficio Vendite*



# DET NORSKE VERITAS

## QUALITY MANAGEMENT SYSTEM CERTIFICATE

Certificato No. / Certificate No. **CERT-08919-2001-AQ-MIL-SINCERT**

Si attesta che / This certifies that

IL SISTEMA DI GESTIONE PER LA QUALITÀ DI / THE QUALITY MANAGEMENT SYSTEM OF

**TIEFFE S.r.l.**

**Via dell'Industria, 7 - 27010 Cura Carpignano (PV) - Italy**

È CONFORME AI REQUISITI DELLA NORMA PER I SISTEMI DI GESTIONE PER LA QUALITÀ  
CONFORMS TO THE QUALITY MANAGEMENT SYSTEMS STANDARD

**UNI EN ISO 9001:2000 (ISO 9001:2000)**

Questa certificazione è valida per il seguente campo applicativo:

This certificate is valid for the following products or services:

*(Ulteriori chiarimenti riguardanti lo scopo e l'applicabilità dei requisiti della normativa si possono ottenere consultando l'organizzazione certificata)  
(Further clarifications regarding the scope and the applicability of the requirements of the standard(s) may be obtained by consulting the certified organisation)*

**Progettazione e produzione di raccordi per tubo flessibile per impianti oleodinamici**

*Design and manufacture of hose fittings for oil-pressure plants*

Luogo e data  
Place and date

**Agrate Brianza, (MI) 2005-12-29**

Data Prima Emissione:  
First Issue Date:  
**2001-07-18**

per l'Organismo di Certificazione  
for the Accredited Unit  
**Det Norske Veritas Italia S.r.l.**

Lead Auditor: **CESARE GALLOTTI**

Settore EA: 17

**SINCERT**

ACCREDITATO ORGANISMO DI CERTIFICAZIONE E SPERIMENTAZIONE

SGQ Registrazione N. 003A  
SGA Registrazione N. 003D  
PRD Registrazione N. 003E

Membro degli Accordi di Mutuo Riconoscimento EA e IAF  
Signatory of EA and IAF Mutual Recognition Agreements

**Leonardo Omodeo Zorini**  
Management Representative

La validità del presente certificato è subordinata a sorveglianza periodica (ogni 6, 9 o 12 mesi) e al riesame completo del sistema con periodicità triennale  
The validity of this certificate is subject to periodical audits (every 6, 9 or 12 months) and the complete re-assessment of the system every three years

Le aziende in possesso di un certificato valido sono presenti nella banca dati sul sito [www.dnv.it](http://www.dnv.it) e sul sito Sincert ([www.sincert.it](http://www.sincert.it)) - All the companies with a valid certificate are online at the following addresses: [www.dnv.it](http://www.dnv.it) and [www.sincert.it](http://www.sincert.it)

**FERRULES**  
 BOCCOLE

TIEFFE P/N	TYPE TIPO	DESCRIPTION DESCRIZIONE	Page
BSN4xx	NON SKIVE	<b>NON SKIVE SWAGED FERRULE</b> BOCCOLA A PRESSARE - SENZA PELATURA	5
BSS4xx	SKIVE	<b>OUTSIDE SKIVE SWAGED FERRULE</b> BOCCOLA A PRESSARE - PELATURA ESTERNA	5
BSS6xx	SKIVE	<b>OUTSIDE SKIVE SWAGED FERRULE</b> BOCCOLA A PRESSARE - PELATURA ESTERNA	5

**B.S.P. SERIES**  
 SERIE B.S.P. (GAS)

TIEFFE P/N	TYPE TIPO	DESCRIPTION DESCRIZIONE	Page
CSxxxxMG	AGR	<b>BSP PARALLEL MALE - 60° CONE SEAT</b> MASCHIO BSP (GAS) CILINDRICO - SVASATO 60°	6
CSxxxxMGC	AGR-K	<b>BSP TAPER MALE - 60° CONE SEAT</b> MASCHIO BSP (GAS) CONICO - SVASATO 60°	6
CSxxxxFGO	DKOR	<b>BSP STRAIGHT FEMALE - 60° O'RING CONE - TIEFFE NUT</b> FEMMINA DIRITTA BSP (GAS) - OGIVA 60° O'RING - DADO TIEFFE	7
CSxxxxFGO45	DKOR45	<b>45° BSP SWEPT ELBOW - 60° O'RING CONE - TIEFFE NUT</b> CURVA 45° BSP (GAS) - OGIVA 60° O'RING - DADO TIEFFE	7
CSxxxxFGO90	DKOR90	<b>90° BSP SWEPT ELBOW - 60° O'RING CONE - TIEFFE NUT</b> CURVA 90° BSP (GAS) - OGIVA 60° O'RING - DADO TIEFFE	7

**N.P.T.F. SERIES**  
 SERIE N.P.T.F.

TIEFFE P/N	TYPE TIPO	DESCRIPTION DESCRIZIONE	Page
CSxxxxNPT	AGN	<b>N.P.T.F. MALE - 60° CONE SEAT</b> MASCHIO N.P.T.F. - SVASATO 60°	8

**J.I.C. SERIES**  
 SERIE J.I.C.

TIEFFE P/N	TYPE TIPO	DESCRIPTION DESCRIZIONE	Page
CSxxxxMI	AGJ	<b>J.I.C. MALE - 74° CONE</b> MASCHIO J.I.C. - CONO 74°	8
CSxxxxFIC	DKJ	<b>J.I.C. FEMALE - 74° CONE SEAT - DOUBLE EXAGON - TIEFFE NUT</b> FEMMINA J.I.C. - SVASATA 74° - DOPPIO ESAGONO - DADO TIEFFE	8
CSxxxxFIS45	DKJ45	<b>JIC 45° SWEPT ELBOW - 74° CONE SEAT - TIEFFE NUT</b> CURVA 45° JIC - SVASATA 74° - DADO TIEFFE	9
CSxxxxFIS90	DKJ90	<b>JIC 90° SWEPT ELBOW - 74° CONE SEAT - TIEFFE NUT</b> CURVA 90° JIC - SVASATA 74° - DADO TIEFFE	9
CSxxxxFIS90-Kxxx	DKJ90 LONG DROP	<b>JIC 90° LONG DROP SWEPT ELBOW - 74° CONE SEAT - TIEFFE NUT</b> CURVA 90° JIC - INGOMBRO SPECIALE - SVASATA 74° - DADO TIEFFE	9



**O.R.F.S. SERIES**

## SERIE O.R.F.S.

TIEFFE P/N	TYPE TIPO	DESCRIPTION DESCRIZIONE	Page
CSxxxxMRS	MRS	ORFS MALE MASCHIO ORFS	10
CSxxxxFRC	FRC	DOUBLE EXAGON ORFS STRAIGHT FEMALE - PRESSED NUT FEMMINA ORFS - DOPPIO ESAGONO - DADO PRESSATO	10
CSxxxxFRS45	FRS45	45° ORFS SWEPT ELBOW - SLIP ON NUT CURVA 45° ORFS - DADO LIBERO	11
CSxxxxFRS90	FRS90	90° ORFS SWEPT ELBOW - SLIP ON NUT CURVA 90° ORFS - DADO LIBERO	11
CSxxxxFRS90-Kxxx	FRS90 LONG DROP	LONG DROP 90° ORFS SWEPT ELBOW - SLIP ON NUT CURVA 90° ORFS LUNGA - DADO LIBERO	11

**24° METRIC SERIES**

## SERIE METRICA 24°

TIEFFE P/N	TYPE TIPO	DESCRIPTION DESCRIZIONE	Page
CSxxMMxxS	CES	METRIC MALE - 24° CONE SEAT - HEAVY DUTY MASCHIO METRICO - SVASATO 24° - SERIE PESANTE	12
CSxxFOSxxS	DKOS	METRIC FEMALE - 24° O'RING CONE - HEAVY DUTY FEMMINA METRICA - CONO 24° O'RING - SERIE PESANTE	12
CSxxFOSxxS45	DKOS45	45° METRIC SWEPT ELBOW - 24° O'RING CONE - HEAVY DUTY CURVA 45° METRICA - CONO 24° O'RING - SERIE PESANTE	12
CSxxFOSxxS90	DKOS90	90° METRIC SWEPT ELBOW - 24° O'RING CONE - HEAVY DUTY CURVA 90° METRICA - CONO 24° O'RING - SERIE PESANTE	12

**FLANGES "L" SERIES - SAE CODE 61**

## SERIE FLANGE "L" - CODICE SAE 61

TIEFFE P/N	TYPE TIPO	DESCRIPTION DESCRIZIONE	Page
CSxxxxFL	SFL	STRAIGHT FLANGE - ISO "L" SERIES - SAE CODE 61 FLANGIA DIRITTA - ISO SERIE "L" - SAE CODICE 61	13
CSxxxxFL45	SFL45	45° FLANGE ELBOW - ISO "L" SERIES - SAE CODE 61 FLANGIA 45° - ISO SERIE "L" - SAE CODICE 61	13
CSxxxxFL90	SFL90	90° FLANGE ELBOW - ISO "L" SERIES - SAE CODE 61 FLANGIA 90° - ISO SERIE "L" - SAE CODICE 61	13
CSxxxxFL22	SFL22,5	22,5° FLANGE ELBOW - ISO "L" SERIES - SAE CODE 61 FLANGIA 22,5° - ISO SERIE "L" - SAE CODICE 61	14
CSxxxxFL30	SFL30	30° FLANGE ELBOW - ISO "L" SERIES - SAE CODE 61 FLANGIA 30° - ISO SERIE "L" - SAE CODICE 61	14
CSxxxxFL60	SFL60	60° FLANGE ELBOW - ISO "L" SERIES - SAE CODE 61 FLANGIA 60° - ISO SERIE "L" - SAE CODICE 61	14
CSxxxxFL67	SFL67,5	67,5° FLANGE ELBOW - ISO "L" SERIES - SAE CODE 61 FLANGIA 67,5° - ISO SERIE "L" - SAE CODICE 61	14
CSxxxxFL100	SFL100	100° FLANGE ELBOW - ISO "L" SERIES - SAE CODE 61 FLANGIA 100° - ISO SERIE "L" - SAE CODICE 61	15
CSxxxxFL110	SFL110	110° FLANGE ELBOW - ISO "L" SERIES - SAE CODE 61 FLANGIA 110° - ISO SERIE "L" - SAE CODICE 61	15
CSxxxxFL135	SFL135	135° FLANGE ELBOW - ISO "L" SERIES - SAE CODE 61 FLANGIA 135° - ISO SERIE "L" - SAE CODICE 61	15

**FLANGES "L" SERIES - SAE CODE 61**

SERIE FLANGE "L" - CODICE SAE 61

TIEFFE P/N	TYPE TIPO	DESCRIPTION DESCRIZIONE	Page
CSxxxxFL90-Kxxx	SFL90 LONG DROP	90° LONG DROP FLANGE ELBOW - ISO "L" SERIES - SAE CODE 61 FLANGIA 90° INGOMBRO SPECIALE - ISO SERIE "L" - SAE CODICE 61	16
ORxxxxxx		O'RING SEAL FOR ISO "L" SERIES - SAE CODE 61 FLANGES GUARNIZIONI D'RING PER FLANGE ISO SERIE "L" - SAE CODICE 61	16

**FLANGES "S" SERIES - SAE CODE 62**

SERIE FLANGE "S" - CODICE SAE 62

TIEFFE P/N	TYPE TIPO	DESCRIPTION DESCRIZIONE	Page
CSxxxxFP	SFS	STRAIGHT FLANGE - ISO "S" SERIES - SAE CODE 62 FLANGIA DIRITTA - ISO SERIE "S" - SAE CODICE 62	17
CSxxxxFP45	SFS45	45° FLANGE ELBOW - ISO "S" SERIES - SAE CODE 62 FLANGIA 45° - ISO SERIE "S" - SAE CODICE 62	17
CSxxxxFP90	SFS90	90° FLANGE ELBOW - ISO "S" SERIES - SAE CODE 62 FLANGIA 90° - ISO SERIE "S" - SAE CODICE 62	17
CSxxxxFP22	SFS22,5	22,5° FLANGE ELBOW - ISO "S" SERIES - SAE CODE 62 FLANGIA 22,5° - ISO SERIE "S" - SAE CODICE 62	18
CSxxxxFP30	SFS30	30° FLANGE ELBOW - ISO "S" SERIES - SAE CODE 62 FLANGIA 30° - ISO SERIE "S" - SAE CODICE 62	18
CSxxxxFP60	SFS60	60° FLANGE ELBOW - ISO "S" SERIES - SAE CODE 62 FLANGIA 60° - ISO SERIE "S" - SAE CODICE 62	18
CSxxxxFP67	SFS67,5	67,5° FLANGE ELBOW - ISO "S" SERIES - SAE CODE 62 FLANGIA 67,5° - ISO SERIE "S" - SAE CODICE 62	18
CSxxxxFP90-Kxxx	SFS90 LONG DROP	90° LONG DROP FLANGE ELBOW - ISO "S" SERIES - SAE CODE 62 FLANGIA 90° INGOMBRO SPECIALE - ISO SERIE "S" - SAE CODICE 62	19
ORxxxxxx		O'RING SEAL FOR ISO "S" SERIES - SAE CODE 62 FLANGES GUARNIZIONI D'RING PER FLANGE ISO SERIE "S" - SAE CODICE 62	19

**FLANGES SUPERCAT SERIES**

SERIE FLANGE SUPERCAT

TIEFFE P/N	TYPE TIPO	DESCRIPTION DESCRIZIONE	Page
CSxxxxYP	SFS SUPERCAT	"SUPERCAT" STRAIGHT FLANGE FLANGIA "SUPERCAT" - DIRITTA	20
CSxxxxYP45	SFS45 SUPERCAT	"SUPERCAT" 45° FLANGE ELBOW FLANGIA "SUPERCAT" - CURVA 45°	20
CSxxxxYP90	SFS90 SUPERCAT	"SUPERCAT" 90° FLANGE ELBOW FLANGIA "SUPERCAT" - CURVA 90°	20
CSxxxxYP22	SFS22,5 SUPERCAT	"SUPERCAT" 22,5° FLANGE ELBOW FLANGIA "SUPERCAT" - CURVA 22,5°	21
CSxxxxYP30	SFS30 SUPERCAT	"SUPERCAT" 30° FLANGE ELBOW FLANGIA "SUPERCAT" - CURVA 30°	21
CSxxxxYP60	SFS60 SUPERCAT	"SUPERCAT" 60° FLANGE ELBOW FLANGIA "SUPERCAT" - CURVA 60°	21
CSXXXXYP67	SFS67,5 SUPERCAT	"SUPERCAT" 67,5° FLANGE ELBOW FLANGIA "SUPERCAT" - CURVA 67,5°	21

**FLANGES SUPERCAT SERIES**  
SERIE FLANGE SUPERCAT

TIEFFE P/N	TYPE TIPO	DESCRIPTION DESCRIZIONE	Page
CSxxxxYP90-Kxxx	SFS90 SUPERCAT	"SUPERCAT" 90° LONG DROP FLANGE ELBOW FLANGIA "SUPERCAT" - CURVA 90° - INGOMBRO SPECIALE	22
DRxx		D'RING SEAL FOR "SUPERCAT" FLANGES GUARNIZIONI D'RING PER FLANGE "SUPERCAT"	22

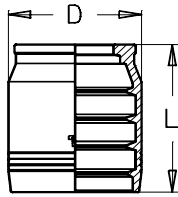
**ASSEMBLING DATA**  
DATI DI ASSEMBLAGGIO

DESCRIPTION DESCRIZIONE	Page
<b>FEMALE SWIVEL ENDS TORQUE VALUES</b> COPPIE DI SERRAGGIO FEMMINE GIREVOLI	23
<b>HOSE ASSEMBLING PROCEDURE - BY CHECKING INSERT BORE COLLAPSE</b> PROCEDURA DI ASSEMBLAGGIO TUBI FLESSIBILI - METODO DI CONTROLLO DEL COLLASSO FORO	24
<b>"SCS" COLLAPSE CONTROL MANDREL DIMENSIONS</b> DIMENSIONI SPINE DI CONTROLLO COLLASSO "SCS"	25
<b>SKIVE ASSEMBLING DATA</b> DATI DI ASSEMBLAGGIO CON PELATURA	26
<b>NON SKIVE ASSEMBLING DATA</b> DATI DI ASSEMBLAGGIO SENZA PELATURA	27

**NON SKIVE**

**BSN4**

**NON SKIVE SWAGED FERRULE**  
 BOCCOLA A PRESSARE - SENZA PELATURA

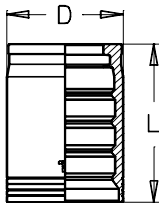


TIEFFE Part. N°	Hose I.D. Ø Interno tubo			Dimensions (mm)		Applications Applicazioni					
	DN	SIZE	Inch	D	L						
<b>BSN412</b>	19	12	3/4"	43	50	<b>4SP</b>	<b>4SH</b>	<b>R9R</b>	<b>R12</b>	<b>R13</b>	<b>R15</b>
<b>BSN416</b>	25	16	1"	51	56	<b>4SP</b>	<b>4SH</b>	<b>R9R</b>	<b>R12</b>	<b>R13</b>	<b>R15</b>
<b>BSN420</b>	31	20	1 1/4"	61	68		<b>4SH</b>	<b>R9R</b>	<b>R12</b>		
<b>BSN424</b>	38	24	1 1/2"	70	86		<b>4SH</b>	<b>R9R</b>	<b>R12</b>		
<b>BSN432</b>	51	32	2"	85	100		<b>4SH</b>	<b>R9R</b>	<b>R12</b>		

**SKIVE**

**BSS4**

**OUTSIDE SKIVE SWAGED FERRULE**  
 BOCCOLA A PRESSARE - PELATURA ESTERNA

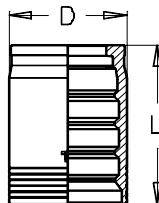


TIEFFE Part. N°	Hose I.D. Ø Interno tubo			Dimensions (mm)		Applications Applicazioni					
	DN	SIZE	Inch	D	L						
<b>BSS412</b>	19	12	3/4"	38	54	<b>4SP</b>	<b>4SH</b>	<b>R9R</b>	<b>R12</b>	<b>R13</b>	<b>R15</b>
<b>BSS416</b>	25	16	1"	46	60	<b>4SP</b>	<b>4SH</b>	<b>R9R</b>	<b>R12</b>	<b>R13</b>	<b>R15</b>
<b>BSS420</b>	31	20	1 1/4"	54	72		<b>4SH</b>	<b>R9R</b>	<b>R12</b>		
<b>BSS424</b>	38	24	1 1/2"	62	90		<b>4SH</b>	<b>R9R</b>	<b>R12</b>		
<b>BSS432</b>	51	32	2"	76	102		<b>4SH</b>	<b>R9R</b>	<b>R12</b>		

**SKIVE**

**BSS6**

**OUTSIDE SKIVE SWAGED FERRULE**  
 BOCCOLA A PRESSARE - PELATURA ESTERNA

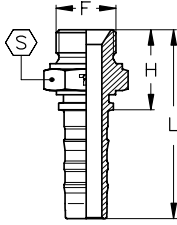


TIEFFE Part. N°	Hose I.D. Ø Interno tubo			Dimensions (mm)		Applications Applicazioni					
	DN	SIZE	Inch	D	L						
<b>BSS620</b>	31	20	1 1/4"	58	72	<b>4SP</b>				<b>R13</b>	<b>R15</b>
<b>BSS624</b>	38	24	1 1/2"	68	90	<b>4SP</b>				<b>R13</b>	<b>R15</b>
<b>BSS632</b>	51	32	2"	84	102	<b>4SP</b>				<b>R13</b>	

**BS 5200**

**AGR**

**BSP PARALLEL MALE - 60° CONE SEAT**  
*MASCHIO BSP (GAS) CILINDRICO - SVASATO 60°*

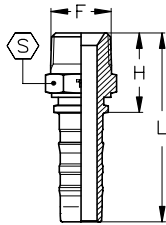


TIEFFE Part.N.	Hose I.D. Ø interno tubo			Thread Filetto	Dimensions (mm)					Maximum W.P.	
	DN	Size	Inch	F	H	L	S			bar	PSI
<b>CS1212MG</b>	20	12	3/4"	3/4"-14	38	89	32			420	6000
<b>CS1216MG</b>	20	12	3/4"	1"-11	43	94	41			420	6000
<b>CS1616MG</b>	25	16	1"	1"-11	45	101	41			420	6000
<b>CS1620MG</b>	25	16	1"	1 1/4"-11	48	104	50			345	5000
<b>CS2020MG</b>	32	20	1 1/4"	1 1/4"-11	50	117	50			345	5000
<b>CS2024MG</b>	32	20	1 1/4"	1 1/2"-11	53	120	55			345	5000
<b>CS2424MG</b>	40	24	1 1/2"	1 1/2"-11	55	138	55			345	5000
<b>CS3232MG</b>	50	32	2"	2"-11	63	159	70			345	5000

**BSP TAPER**

**AGR-K**

**BSP TAPER MALE - 60° CONE SEAT**  
*MASCHIO BSP (GAS) CONICO - SVASATO 60°*



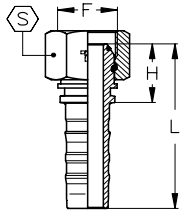
TIEFFE Part.N.	Hose I.D. Ø interno tubo			Thread Filetto	Dimensions (mm)					Maximum W.P.	
	DN	Size	Inch	F	H	L	S			bar	PSI
<b>CS1212MGC</b>	20	12	3/4"	3/4"-14	37	88	27			420	6000
<b>CS1616MGC</b>	25	16	1"	1"-11	44	101	36			380	5400
<b>CS2020MGC</b>	32	20	1 1/4"	1 1/4"-11	51	118	46			325	4600
<b>CS2424MGC</b>	40	24	1 1/2"	1 1/2"-11	54	137	50			290	4100
<b>CS3232MGC</b>	50	32	2"	2"-11	64	160	65			250	3600



**BS 5200**

**DKOR**

**BSP STRAIGHT FEMALE - 60° O'RING CONE - TIEFFE NUT**  
*FEMMINA DIRITTA BSP (GAS) - OGIVA 60° O'RING - DADO TIEFFE*

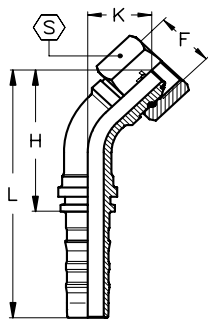


TIEFFE Part.N.	Hose I.D. Ø interno tubo			Thread Filettatura	Dimensions (mm)					Maximum W.P.	
	DN	Size	Inch	F	H	L	S	O'Ring	bar	PSI	
CS1212FGO	20	12	3/4"	3/4"-14	29	80	32	17x1,5	420	6000	
CS1216FGO	20	12	3/4"	1"-11	32	83	41	22x1,5	420	6000	
CS1616FGO	25	16	1"	1"-11	34	90	41	22x1,5	420	6000	
CS1620FGO	25	16	1"	1 1/4"-11	37	93	50	28,3x1,78	345	5000	
CS2020FGO	32	20	1 1/4"	1 1/4"-11	39	106	50	28,3x1,78	345	5000	
CS2024FGO	32	20	1 1/4"	1 1/2"-11	41	107	60	33,05x1,78	345	5000	
CS2424FGO	40	24	1 1/2"	1 1/2"-11	43	125	60	33,05x1,78	345	5000	
CS3232FGO	50	32	2"	2"-11	47	143	75	44,17x1,78	345	5000	

**BS 5200**

**DKOR45**

**45° BSP SWEPT ELBOW - 60° O'RING CONE - TIEFFE NUT**  
*CURVA 45° BSP (GAS) - OGIVA 60° O'RING - DADO TIEFFE*

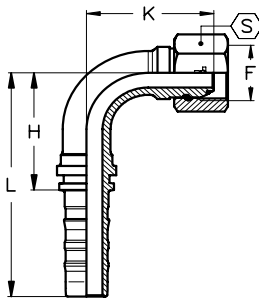


TIEFFE Part.N.	Hose I.D. Ø interno tubo			Thread Filettatura	Dimensions (mm)					Maximum W.P.	
	DN	Size	Inch	F	H	L	K	S	O'Ring	bar	PSI
CS1212FGO45	20	12	3/4"	3/4"-14	67	118	29	32	17x1,5	420	6000
CS1216FGO45	20	12	3/4"	1"-11	67	118	29	41	22x1,5	420	6000
CS1616FGO45	25	16	1"	1"-11	86	142	36	41	22x1,5	420	6000
CS1620FGO45	25	16	1"	1 1/4"-11	86	142	36	50	28,3x1,78	345	5000
CS2020FGO45	32	20	1 1/4"	1 1/4"-11	103	169	43	50	28,3x1,78	345	5000
CS2024FGO45	32	20	1 1/4"	1 1/2"-11	103	169	43	60	33,05x1,78	345	5000
CS2424FGO45	40	24	1 1/2"	1 1/2"-11	123	206	51	60	33,05x1,78	345	5000
CS3232FGO45	50	32	2"	2"-11	160	257	65	75	44,17x1,78	345	5000

**BS 5200**

**DKOR90**

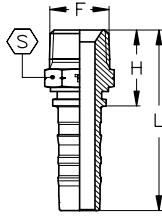
**90° BSP SWEPT ELBOW - 60° O'RING CONE - TIEFFE NUT**  
*CURVA 90° BSP (GAS) - OGIVA 60° O'RING - DADO TIEFFE*



TIEFFE Part.N.	Hose I.D. Ø interno tubo			Thread Filettatura	Dimensions (mm)					Maximum W.P.	
	DN	Size	Inch	F	H	L	K	S	O'Ring	bar	PSI
CS1212FGO90	20	12	3/4"	3/4"-14	55	106	57	32	17x1,5	420	6000
CS1216FGO90	20	12	3/4"	1"-11	55	106	57	41	22x1,5	420	6000
CS1616FGO90	25	16	1"	1"-11	71	128	72	41	22x1,5	420	6000
CS1620FGO90	25	16	1"	1 1/4"-11	71	128	72	50	28,3x1,78	345	5000
CS2020FGO90	32	20	1 1/4"	1 1/4"-11	87	154	88	50	28,3x1,78	345	5000
CS2024FGO90	32	20	1 1/4"	1 1/2"-11	87	154	88	60	33,05x1,78	345	5000
CS2424FGO90	40	24	1 1/2"	1 1/2"-11	105	188	104	60	33,05x1,78	345	5000
CS3232FGO90	50	32	2"	2"-11	140	237	137	75	44,17x1,78	345	5000

**SAE J516**

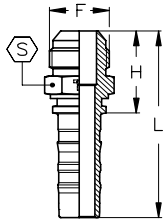
**AGN** **N.P.T.F. MALE - 60° CONE SEAT**  
*MASCHIO N.P.T.F. - SVASATO 60°*



TIEFFE Part.N.	Hose I.D. Ø interno tubo			Thread Filetto	Dimensions (mm)					Maximum W.P.	
	DN	Size	Inch	F	H	L	S			bar	PSI
CS1212NPT	20	12	3/4"	3/4"-14	39	90	27			420	6000
CS1216NPT	20	12	3/4"	1"-11,5	47	98	36			380	5400
CS1612NPT	20	12	3/4"	3/4"-14	41,5	98	32			420	6000
CS1616NPT	20	12	3/4"	1"-11,5	48,5	105	36			380	5400
CS1620NPT	20	12	3/4"	1 1/4"-11,5	53	109,5	46			325	4600
CS2016NPT	32	20	1 1/4"	1"-11,5	52,5	119	41			380	5400
CS2020NPT	32	20	1 1/4"	1 1/4"-11,5	55	121,5	46			325	4600
CS2024NPT	32	20	1 1/4"	1 1/2"-11,5	59	125,5	50			290	4100
CS2424NPT	38	24	1 1/2"	1 1/2"-11,5	61	143,5	50			290	4100
CS2432NPT	38	24	1 1/2"	2"-11,5	67,5	150	65			250	3600
CS3232NPT	51	32	2"	2"-11,5	70,5	167	65			250	3600

**ISO12151/5 SAE J516**

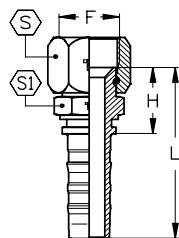
**AGJ** **J.I.C. MALE - 74° CONE**  
*MASCHIO J.I.C. - CONO 74°*



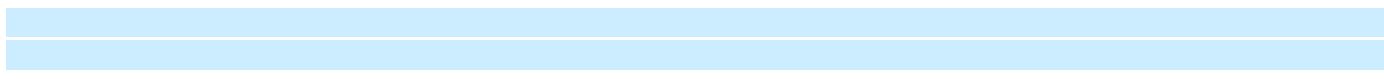
TIEFFE Part.N.	Hose I.D. Ø interno tubo			Thread Filetto	Dimensions (mm)					Maximum W.P.	
	DN	Size	Inch	F	H	L	S			bar	PSI
CS1210MI	20	12	3/4"	7/8"-14	37	88	27			420	6000
CS1212MI	20	12	3/4"	1 1/16"-12	40	91	27			420	6000
CS1214MI	20	12	3/4"	1 3/16"-12	41,5	92,5	32			420	6000
CS1216MI	20	12	3/4"	1 5/16"-12	43	94	36			380	5400
CS1612MI	25	16	1"	1 1/16"-12	43	99,5	32			420	6000
CS1616MI	25	16	1"	1 5/16"-12	45	101,5	36			380	5400
CS1620MI	25	16	1"	1 5/8"-12	48	104,5	46			325	4600
CS2016MI	32	20	1 1/4"	1 5/16"-12	48,5	115	41			380	5400
CS2020MI	32	20	1 1/4"	1 5/8"-12	50,5	117	46			325	4600
CS2024MI	32	20	1 1/4"	1 7/8"-12	55	121,5	50			290	4100
CS2424MI	38	24	1 1/2"	1 7/8"-12	57	139,5	50			290	4100
CS2432MI	38	24	1 1/2"	2 1/2"-12	65,5	148	65			250	3600
CS3232MI	51	32	2"	2 1/2"-12	68,5	165	65			250	3600

**ISO12151/5 SAE J516**

**DKJ** **J.I.C. FEMALE - 74° CONE SEAT - DOUBLE EXAGON - TIEFFE NUT**  
*FEMMINA J.I.C. - SVASATA 74° - DOPPIO ESAGONO - DADO TIEFFE*



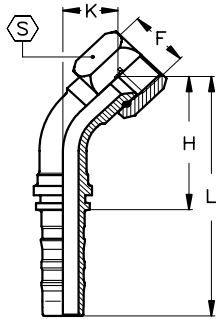
TIEFFE Part.N.	Hose I.D. Ø interno tubo			Thread Filetto	Dimensions (mm)					Maximum W.P.	
	DN	Size	Inch	F	H	L	S	S1		bar	PSI
CS1210FIC	20	12	3/4"	7/8"-14	33	84	27	27		420	6000
CS1212FIC	20	12	3/4"	1 1/16"-12	34	85	32	27		420	6000
CS1214FIC	20	12	3/4"	1 3/16"-12	35,5	86,5	36	30		420	6000
CS1216FIC	20	12	3/4"	1 5/16"-12	38	89	41	32		380	5400
CS1612FIC	25	16	1"	1 1/16"-12	36,5	93	32	32		420	6000
CS1616FIC	25	16	1"	1 5/16"-12	39,5	96	41	32		380	5400
CS1620FIC	25	16	1"	1 5/8"-12	46	102,5	50	41		325	4600
CS2016FIC	32	20	1 1/4"	1 5/16"-12	45,5	112	41	41		380	5400
CS2020FIC	32	20	1 1/4"	1 5/8"-12	48	114,5	50	41		325	4600
CS2024FIC	32	20	1 1/4"	1 7/8"-12	51	117,5	60	46		290	4100
CS2424FIC	38	24	1 1/2"	1 7/8"-12	53	135,5	60	46		290	4100
CS2432FIC	38	24	1 1/2"	2 1/2"-12	66	148,5	75	60		250	3600
CS3232FIC	51	32	2"	2 1/2"-12	69	165,5	75	60		250	3600



ISO12151/5  
 SAE J516

**DKJ45**

**JIC 45° SWEPT ELBOW - 74° CONE SEAT - TIEFFE NUT**  
*CURVA 45° JIC - SVASATA 74° - DADO TIEFFE*

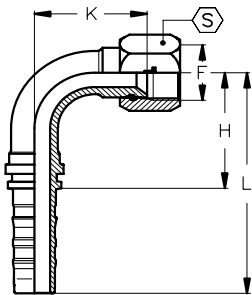


TIEFFE Part.N.	Hose I.D. Ø interno tubo			Thread Filetto	Dimensions (mm)					Maximum W.P.	
	DN	Size	Inch	F	H	L	K	S	bar	PSI	
CS1210FIS45	20	12	3/4"	7/8"-14	66	117	28	27	420	6000	
CS1212FIS45	20	12	3/4"	1 1/16"-12	63	114	25	32	420	6000	
CS1214FIS45	20	12	3/4"	1 3/16"-12	63	114	25	36	420	6000	
CS1216FIS45	20	12	3/4"	1 5/16"-12	63	114	25	41	380	5400	
CS1612FIS45	25	16	1"	1 1/16"-12	85	141	35	32	420	6000	
CS1616FIS45	25	16	1"	1 5/16"-12	82	138	32	41	380	5400	
CS1620FIS45	25	16	1"	1 5/8"-12	82	138	32	50	325	4600	
CS2016FIS45	32	20	1 1/4"	1 5/16"-12	100	167	41	41	380	5400	
CS2020FIS45	32	20	1 1/4"	1 5/8"-12	98	164	38	50	325	4600	
CS2024FIS45	32	20	1 1/4"	1 7/8"-12	98	164	38	60	290	4100	
CS2424FIS45	38	24	1 1/2"	1 7/8"-12	118	201	46	60	290	4100	
CS2432FIS45	38	24	1 1/2"	2 1/2"-12	118	201	46	75	250	3600	
CS3232FIS45	51	32	2"	2 1/2"-12	157	253	62	75	250	3600	

ISO12151/5  
 SAE J516

**DKJ90**

**JIC 90° SWEPT ELBOW - 74° CONE SEAT - TIEFFE NUT**  
*CURVA 90° JIC - SVASATA 74° - DADO TIEFFE*

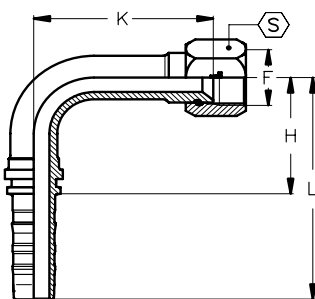


TIEFFE Part.N.	Hose I.D. Ø interno tubo			Thread Filetto	Dimensions (mm)					Maximum W.P.	
	DN	Size	Inch	F	H	L	K	S	bar	PSI	
CS1210FIS90	20	12	3/4"	7/8"-14	55	106	55	27	420	6000	
CS1212FIS90	20	12	3/4"	1 1/16"-12	55	106	52	32	420	6000	
CS1214FIS90	20	12	3/4"	1 3/16"-12	55	106	52	36	420	6000	
CS1216FIS90	20	12	3/4"	1 5/16"-12	55	106	52	41	380	5400	
CS1612FIS90	25	16	1"	1 1/16"-12	71	128	71	32	420	6000	
CS1616FIS90	25	16	1"	1 5/16"-12	71	128	67	41	380	5400	
CS1620FIS90	25	16	1"	1 5/8"-12	71	128	67	50	325	4600	
CS2016FIS90	32	20	1 1/4"	1 5/16"-12	87	154	84	41	380	5400	
CS2020FIS90	32	20	1 1/4"	1 5/8"-12	87	154	81	50	325	4600	
CS2024FIS90	32	20	1 1/4"	1 7/8"-12	87	154	81	60	290	4100	
CS2424FIS90	38	24	1 1/2"	1 7/8"-12	105	188	97	60	290	4100	
CS2432FIS90	38	24	1 1/2"	2 1/2"-12	105	188	97	75	250	3500	
CS3232FIS90	51	32	2"	2 1/2"-12	140	237	132	75	250	3500	

ISO12151/5  
 SAE J516

**DKJ90**

**JIC 90° LONG DROP SWEPT ELBOW - 74° CONE SEAT - TIEFFE NUT**  
*CURVA 90° JIC - INGOMBRO SPECIALE - SVASATA 74° - DADO TIEFFE*

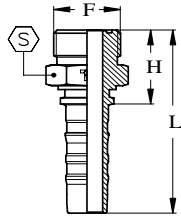


TIEFFE Part.N.	Hose I.D. Ø interno tubo			Thread Filetto	Dimensions (mm)					Maximum W.P.	
	DN	Size	Inch	F	H	L	K	S	bar	PSI	
CS1212FIS90-K96	20	12	3/4"	1 1/16"-12	55	106	96	32	420	6000	
CS1616FIS90-K116	25	16	1"	1 5/16"-12	71	128	116	41	380	5400	
CS1620FIS90-K116	25	16	1"	1 5/8"-12	71	128	116	50	325	4600	
CS2020FIS90-K136	32	20	1 1/4"	1 5/8"-12	87	154	136	50	325	4600	
CS2424FIS90-K162	38	24	1 1/2"	1 7/8"-12	105	188	162	60	290	4100	
CS3232FIS90-K220	51	32	2"	2 1/2"-12	140	137	220	75	250	3500	

ISO12151/1  
 SAE J516

**MRS**

**ORFS MALE**  
 MASCHIO ORFS

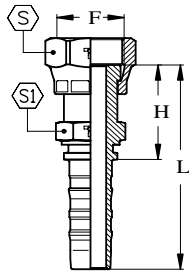


NRS	Hose I.D. Ø interno tubo			Thread Filettatura	Dimensions (mm)				Maximum W.P.	
	DN	Size	Inch	F	H	L	S		bar	PSI
<b>CS1212MRS</b>	20	12	3/4"	1 3/16"-12	36	87	32		420	6000
<b>CS1616MRS</b>	25	16	1"	1 7/16"-12	41	97	41		420	6000
<b>CS2020MRS</b>	32	20	1 1/4"	1 11/16"-12	44	111	46		350	5000
<b>CS2424MRS</b>	40	24	1 1/2"	2"-12	48	131	55		290	4200

ISO12151/1  
 SAE J516

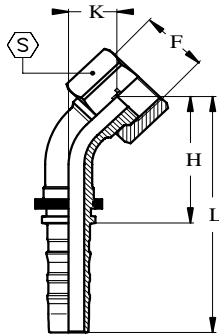
**FRC**

**DOUBLE EXAGON ORFS STRAIGHT FEMALE - PRESSED NUT**  
 FEMMINA ORFS - DOPPIO ESAGONO - DADO PRESSATO



TIEFFE Part.N.	Hose I.D. Ø interno tubo			Thread Filettatura	Dimensions (mm)				Maximum W.P.	
	DN	Size	Inch	F	H	L	S	S1	bar	PSI
<b>CS1210FRC</b>	20	12	3/4"	1"-14	43	94	30	27	420	6000
<b>CS1212FRC</b>	20	12	3/4"	1 3/16"-12	46	97	36	30	420	6000
<b>CS1216FRC</b>	20	12	3/4"	1 7/16"-12	49	100	41	36	420	6000
<b>CS1616FRC</b>	25	16	1"	1 7/16"-12	51	107	41	36	420	6000
<b>CS1620FRC</b>	25	16	1"	1 11/16"-12	52	109	50	41	350	5000
<b>CS2020FRC</b>	32	20	1 1/4"	1 11/16"-12	55	121	50	41	350	5000
<b>CS2424FRC</b>	40	24	1 1/2"	2"-12	60	142	60	50	290	4200

ISO12151/1  
 SAE J516

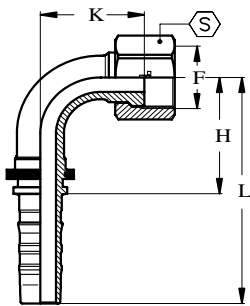


**FRS45**

**45° ORFS SWEPT ELBOW - SLIP ON NUT**  
*CURVA 45° ORFS - DADO LIBERO*

TIEFFE Part.N.	Hose I.D. Ø interno tubo			Thread Filettatura	Dimensions (mm)					Maximum W.P.	
	DN	Size	Inch	F	H	L	K	S	bar	PSI	
<b>CS1212FRS45</b>	20	12	3/4"	1 3/16"-12	60	111	22	36	420	6000	
<b>CS1216FRS45</b>	20	12	3/4"	1 7/16"-12	61	112	23	41	420	6000	
<b>CS1616FRS45</b>	25	16	1"	1 7/16"-12	78	134	29	41	420	6000	
<b>CS1620FRS45</b>	25	16	1"	1 11/16"-12	78	134	29	50	350	5000	
<b>CS2020FRS45</b>	32	20	1 1/4"	1 11/16"-12	93	159	34	50	350	5000	
<b>CS2424FRS45</b>	40	24	1 1/2"	2"-12	113	195	41	60	290	4200	

ISO12151/1  
 SAE J516

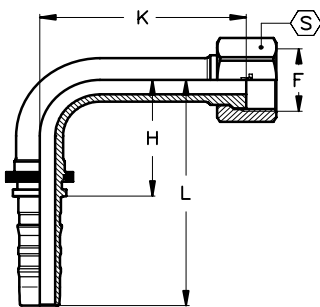


**FRS90**

**90° ORFS SWEPT ELBOW - SLIP ON NUT**  
*CURVA 90° ORFS - DADO LIBERO*

TIEFFE Part.N.	Hose I.D. Ø interno tubo			Thread Filettatura	Dimensions (mm)					Maximum W.P.	
	DN	Size	Inch	F	H	L	K	S	bar	PSI	
<b>CS1212FRS90</b>	20	12	3/4"	1 3/16"-12	54	105	48	36	420	6000	
<b>CS1216FRS90</b>	20	12	3/4"	1 7/16"-12	54	105	49	41	420	6000	
<b>CS1616FRS90</b>	25	16	1"	1 7/16"-12	71	127	62	41	420	6000	
<b>CS1620FRS90</b>	25	16	1"	1 11/16"-12	71	127	62	50	350	5000	
<b>CS2020FRS90</b>	32	20	1 1/4"	1 11/16"-12	87	153	75	50	350	5000	
<b>CS2424FRS90</b>	40	24	1 1/2"	2"-12	105	187	90	60	290	4200	

ISO12151/1  
 SAE J516



**FRS90**

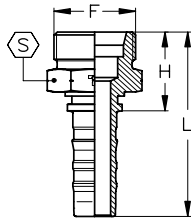
*LONG DROP*

**LONG DROP 90° ORFS SWEPT ELBOW - SLIP ON NUT**  
*CURVA 90° ORFS LUNGA - DADO LIBERO*

TIEFFE Part.N.	Hose I.D. Ø interno tubo			Thread Filettatura	Dimensions (mm)					Maximum W.P.	
	DN	Size	Inch	F	H	L	K	S	bar	PSI	
<b>CS1212FRS90-K96</b>	20	12	3/4"	1 3/16"-12	54	105	96	36	420	6000	
<b>CS1616FRS90-K114</b>	25	16	1"	1 7/16"-12	71	127	114	41	420	6000	
<b>CS2020FRS90-K130</b>	32	20	1 1/4"	1 11/16"-12	87	153	130	50	350	5000	
<b>CS2424FRS90-K155</b>	40	24	1 1/2"	2"-12	105	187	155	60	290	4200	



**ISO 12151-2  
DIN 20078**

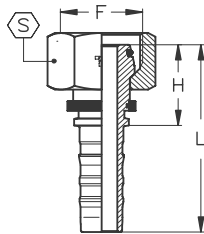


**CES**

**METRIC MALE - 24° CONE SEAT - HEAVY DUTY**  
MASCHIO METRICO - SVASATO 24° - SERIE PESANTE

TIEFFE Part.N.	Hose I.D. Ø interno tubo			Thread Filettatura	Tube	Dimensions (mm)					Maximum W.P.	
	DN	Size	Inch			F	mm	H	L	S		bar
CS12MM20S	20	12	3/4"	M30x2	20	34	85	30			420	6000
CS12MM25S	20	12	3/4"	M36x2	25	38	89	36			420	6000
CS16MM25S	25	16	1"	M36x2	25	40	97	36			380	5400
CS16MM30S	25	16	1"	M42x2	30	44	101	46			280	4000
CS20MM30S	32	20	1 1/4"	M42x2	30	47	113	46			250	3500
CS20MM38S	32	20	1 1/4"	M52x2	38	51	117	55			250	3500
CS24MM38S	40	24	1 1/2"	M52x2	38	53	135	55			250	3500

**ISO 12151-2  
DIN 20078**

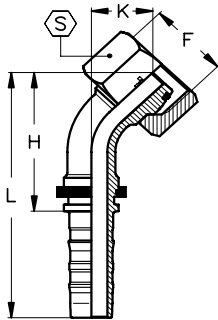


**DKOS**

**METRIC FEMALE - 24° O'RING CONE - HEAVY DUTY**  
FEMMINA METRICA - CONO 24° O'RING - SERIE PESANTE

TIEFFE Part.N.	Hose I.D. Ø interno tubo			Thread Filettatura	Tube	Dimensions (mm)					Maximum W.P.	
	DN	Size	Inch			F	mm	H	L	S	O'Ring	bar
CS12FOS20S	20	12	3/4"	M30x2	20	37	88	36		16,3x2,4	420	6000
CS12FOS25S	20	12	3/4"	M36x2	25	39	90	46		20,3x2,4	420	6000
CS16FOS25S	25	16	1"	M36x2	25	41	97	46		22x2	380	5400
CS16FOS30S	25	16	1"	M42x2	30	42	98	50		25,3x2,4	280	4000
CS20FOS30S	32	20	1 1/4"	M42x2	30	43	109	50		25,3x2,4	250	3500
CS20FOS38S	32	20	1 1/4"	M52x2	38	48	115	60		33,3x2,4	250	3500
CS24FOS38S	40	24	1 1/2"	M52x2	38	51	133	60		33,3x2,4	250	3500

**ISO 12151-2  
DIN 20078**

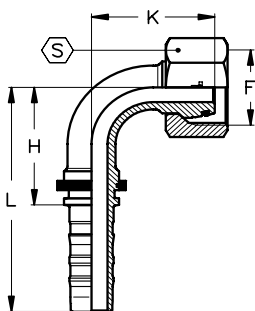


**DKOS45**

**45° METRIC SWEPT ELBOW - 24° O'RING CONE - HEAVY DUTY**  
CURVA 45° METRICA - CONO 24° O'RING - SERIE PESANTE

TIEFFE Part.N.	Hose I.D. Ø interno tubo			Thread Filettatura	Tube	Dimensions (mm)					Maximum W.P.	
	DN	Size	Inch			F	mm	H	L	K	S	O'Ring
CS12FOS20S45	20	12	3/4"	M30x2	20	65	116	27	36	16,3x2,4	420	6000
CS12FOS25S45	20	12	3/4"	M36x2	25	66	117	28	46	20,3x2,4	420	6000
CS16FOS25S45	25	16	1"	M36x2	25	83	140	34	46	22x2	380	5400
CS16FOS30S45	25	16	1"	M42x2	30	82	138	32	50	25,3x2,4	280	4000
CS20FOS30S45	32	20	1 1/4"	M42x2	30	100	166	40	50	25,3x2,4	250	3500
CS20FOS38S45	32	20	1 1/4"	M52x2	38	97	164	38	60	33,3x2,4	250	3500
CS24FOS38S45	40	24	1 1/2"	M52x2	38	121	203	48	60	33,3x2,4	250	3500

**ISO 12151-2  
DIN 20078**



**DKOS90**

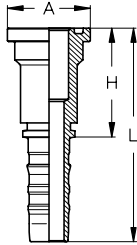
**90° METRIC SWEPT ELBOW - 24° O'RING CONE - HEAVY DUTY**  
CURVA 90° METRICA - CONO 24° O'RING - SERIE PESANTE

TIEFFE Part.N.	Hose I.D. Ø interno tubo			Thread Filettatura	Tube	Dimensions (mm)					Maximum W.P.	
	DN	Size	Inch			F	mm	H	L	K	S	O'Ring
CS12FOS20S90	20	12	3/4"	M30x2	20	55	106	55	36	16,3x2,4	420	6000
CS12FOS25S90	20	12	3/4"	M36x2	25	55	106	55	46	20,3x2,4	420	6000
CS16FOS25S90	25	16	1"	M36x2	25	71	128	69	46	22x2	380	5400
CS16FOS30S90	25	16	1"	M42x2	30	71	128	67	50	25,3x2,4	280	4000
CS20FOS30S90	32	20	1 1/4"	M42x2	30	87	154	83	50	25,3x2,4	250	3500
CS20FOS38S90	32	20	1 1/4"	M52x2	38	87	154	80	60	33,3x2,4	250	3500
CS24FOS38S90	40	24	1 1/2"	M52x2	38	105	188	100	60	33,3x2,4	250	3500

**ISO12151/3  
SAE J516**

**SFL**

**STRAIGHT FLANGE - ISO "L" SERIES - SAE CODE 61**  
FLANGIA DIRITTA - ISO SERIE "L" - SAE CODICE 61

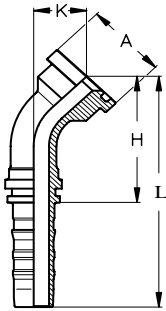


TIEFFE Part.N.	Hose I.D. Ø interno tubo			Flange Flangia		Dimensions (mm)					Maximum W.P.	
	DN	Size	Inch	Size	Inch	H	L	A			bar	PSI
CS1212FL	20	12	3/4"	12	3/4"	55	106	38,1			350	5000
CS1216FL	20	12	3/4"	16	1"	57	108	44,5			350	5000
CS1220FL	20	12	3/4"	20	1 1/4"	55	106	50,8			280	4000
CS1612FL	25	16	1"	12	3/4"	58	114,5	38,1			350	5000
CS1616FL	25	16	1"	16	1"	58	114,5	44,5			350	5000
CS1620FL	25	16	1"	20	1 1/4"	63	119,5	50,8			280	4000
CS1624FL	25	16	1"	24	1 1/2"	55	115,5	60,4			210	3000
CS2016FL	32	20	1 1/4"	16	1"	64	130,5	44,5			350	5000
CS2020FL	32	20	1 1/4"	20	1 1/4"	64	130,5	50,8			280	4000
CS2024FL	32	20	1 1/4"	24	1 1/2"	68	134,5	60,4			210	3000
CS2032FL	32	20	1 1/4"	32	2"	75	141,5	71,4			210	3000
CS2424FL	38	24	1 1/2"	24	1 1/2"	73	155,5	60,4			210	3000
CS2432FL	38	24	1 1/2"	32	2"	76	158,5	71,4			210	3000
CS3232FL	51	32	2"	32	2"	77	176,5	71,4			210	3000
CS3240FL	51	32	2"	40	2 1/2"	90	186,5	84,1			175	2500

**ISO12151/3  
SAE J516**

**SFL45**

**45° FLANGE ELBOW - ISO "L" SERIES - SAE CODE 61**  
FLANGIA 45° - ISO SERIE "L" - SAE CODICE 61

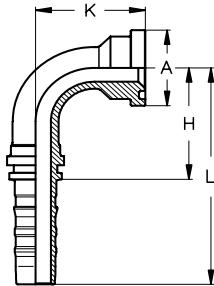


TIEFFE Part.N.	Hose I.D. Ø interno tubo			Flange Flangia		Dimensions (mm)					Maximum W.P.	
	DN	Size	Inch	Size	Inch	H	L	K	A		bar	PSI
CS1212FL45	20	12	3/4"	12	3/4"	63	114	25	38,1		350	5000
CS1216FL45	20	12	3/4"	16	1"	65	116	27	44,5		350	5000
CS1612FL45	25	16	1"	12	3/4"	81	137	31	38,1		350	5000
CS1616FL45	25	16	1"	16	1"	78	134	28	44,5		350	5000
CS1620FL45	25	16	1"	20	1 1/4"	78	134	28	50,8		280	4000
CS2016FL45	32	20	1 1/4"	16	1"	96	163	37	44,5		350	5000
CS2020FL45	32	20	1 1/4"	20	1 1/4"	91	157	32	50,8		280	4000
CS2024FL45	32	20	1 1/4"	24	1 1/2"	91	157	32	60,4		210	3000
CS2424FL45	38	24	1 1/2"	24	1 1/2"	108	191	36	60,4		210	3000
CS2432FL45	38	24	1 1/2"	32	2"	107	189	35	71,4		210	3000
CS3232FL45	51	32	2"	32	2"	151	245	57	71,4		210	3000
CS3240FL45	51	32	2"	40	2 1/2"	146	243	51	84,1		175	2500

**ISO12151/3  
SAE J516**

**SFL90**

**90° FLANGE ELBOW - ISO "L" SERIES - SAE CODE 61**  
FLANGIA 90° - ISO SERIE "L" - SAE CODICE 61

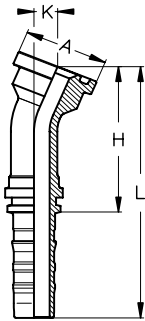


TIEFFE Part.N.	Hose I.D. Ø interno tubo			Flange Flangia		Dimensions (mm)					Maximum W.P.	
	DN	Size	Inch	Size	Inch	H	L	K	A		bar	PSI
CS1212FL90	20	12	3/4"	12	3/4"	55	106	51	38,1		350	5000
CS1216FL90	20	12	3/4"	16	1"	55	106	55	44,5		350	5000
CS1220FL90	20	12	3/4"	20	1 1/4"	55	106	60	50,8		280	4000
CS1612FL90	25	16	1"	12	3/4"	71	128	65	38,1		350	5000
CS1616FL90	25	16	1"	16	1"	71	128	61	44,5		350	5000
CS1620FL90	25	16	1"	20	1 1/4"	71	128	61	50,8		280	4000
CS1624FL90	25	16	1"	24	1 1/2"	71	128	61	60,4		210	3000
CS2016FL90	32	20	1 1/4"	16	1"	87	154	79	44,5		350	5000
CS2020FL90	32	20	1 1/4"	20	1 1/4"	87	154	71	50,8		280	4000
CS2024FL90	32	20	1 1/4"	24	1 1/2"	87	154	71	60,4		210	3000
CS2424FL90	38	24	1 1/2"	24	1 1/2"	105	188	83	60,4		210	3000
CS2432FL90	38	24	1 1/2"	32	2"	105	188	81	71,4		210	3000
CS3232FL90	51	32	2"	32	2"	140	237	122	71,4		210	3000
CS3240FL90	51	32	2"	40	2 1/2"	140	237	117	84,1		175	2500

**ISO12151/3  
SAE J516**

**SFL22,5**

**22,5° FLANGE ELBOW - ISO "L" SERIES - SAE CODE 61**  
FLANGIA 22,5° - ISO SERIE "L" - SAE CODICE 61

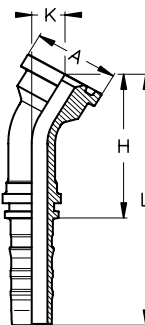


TIEFFE Part.N.	Hose I.D. Ø interno tubo			Flange Flangia		Dimensions (mm)					Maximum W.P.	
	DN	Size	Inch	Size	Inch	H	L	K	A		bar	PSI
CS1212FL22	20	12	3/4"	12	3/4"	70	121	11	38,1		350	5000
CS1216FL22	20	12	3/4"	16	1"	73	124	12	44,5		350	5000
CS1616FL22	25	16	1"	16	1"	86	142	12	44,5		350	5000
CS1620FL22	25	16	1"	20	1 1/4"	86	142	12	50,8		280	4000
CS2020FL22	32	20	1 1/4"	20	1 1/4"	100	166	13	50,8		280	4000
CS2024FL22	32	20	1 1/4"	24	1 1/2"	100	166	13	60,4		210	3000
CS2424FL22	38	24	1 1/2"	24	1 1/2"	118	201	15	60,4		210	3000
CS2432FL22	38	24	1 1/2"	32	2"	116	199	14	71,4		210	3000
CS3232FL22	51	32	2"	32	2"	165	262	22	71,4		210	3000

**ISO12151/3  
SAE J516**

**SFL30**

**30° FLANGE ELBOW - ISO "L" SERIES - SAE CODE 61**  
FLANGIA 30° - ISO SERIE "L" - SAE CODICE 61

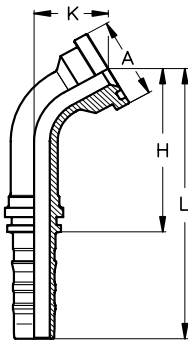


TIEFFE Part.N.	Hose I.D. Ø interno tubo			Flange Flangia		Dimensions (mm)					Maximum W.P.	
	DN	Size	Inch	Size	Inch	H	L	K	A		bar	PSI
CS1212FL30	20	12	3/4"	12	3/4"	68	119	16	38,1		350	5000
CS1216FL30	20	12	3/4"	16	1"	71	122	17	44,5		350	5000
CS1616FL30	25	16	1"	16	1"	84	140	17	44,5		350	5000
CS1620FL30	25	16	1"	20	1 1/4"	84	140	17	50,8		280	4000
CS2020FL30	32	20	1 1/4"	20	1 1/4"	98	164	19	50,8		280	4000
CS2024FL30	32	20	1 1/4"	24	1 1/2"	98	164	19	60,4		210	3000
CS2424FL30	38	24	1 1/2"	24	1 1/2"	116	199	22	60,4		210	3000
CS2432FL30	38	24	1 1/2"	32	2"	114	197	21	71,4		210	3000
CS3232FL30	51	32	2"	32	2"	162	258	31	71,4		210	3000

**ISO12151/3  
SAE J516**

**SFL60**

**60° FLANGE ELBOW - ISO "L" SERIES - SAE CODE 61**  
FLANGIA 60° - ISO SERIE "L" - SAE CODICE 61

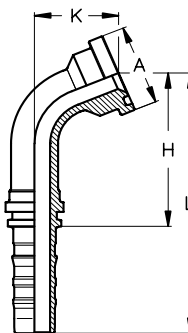


TIEFFE Part.N.	Hose I.D. Ø interno tubo			Flange Flangia		Dimensions (mm)					Maximum W.P.	
	DN	Size	Inch	Size	Inch	H	L	K	A		bar	PSI
CS1212FL60	20	12	3/4"	12	3/4"	77	128	34	38,1		350	5000
CS1216FL60	20	12	3/4"	16	1"	79	130	37	44,5		350	5000
CS1616FL60	25	16	1"	16	1"	98	154	40	44,5		350	5000
CS1620FL60	25	16	1"	20	1 1/4"	98	154	40	50,8		280	4000
CS2020FL60	32	20	1 1/4"	20	1 1/4"	118	184	45	50,8		280	4000
CS2024FL60	32	20	1 1/4"	24	1 1/2"	118	184	45	60,4		210	3000
CS2424FL60	38	24	1 1/2"	24	1 1/2"	140	223	52	60,4		210	3000
CS2432FL60	38	24	1 1/2"	32	2"	139	222	50	71,4		210	3000
CS3232FL60	51	32	2"	32	2"	192	289	73	71,4		210	3000

**ISO12151/3  
SAE J516**

**SFL67,5**

**67,5° FLANGE ELBOW - ISO "L" SERIES - SAE CODE 61**  
FLANGIA 67,5° - ISO SERIE "L" - SAE CODICE 61

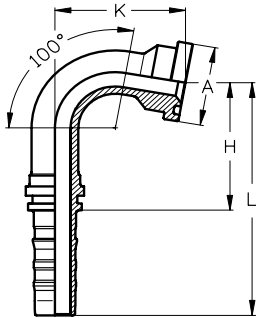


TIEFFE Part.N.	Hose I.D. Ø interno tubo			Flange Flangia		Dimensions (mm)					Maximum W.P.	
	DN	Size	Inch	Size	Inch	H	L	K	A		bar	PSI
CS1212FL67	20	12	3/4"	12	3/4"	72	123	39	38,1		350	5000
CS1216FL67	20	12	3/4"	16	1"	73	124	41	44,5		350	5000
CS1616FL67	25	16	1"	16	1"	92	148	45	44,5		350	5000
CS1620FL67	25	16	1"	20	1 1/4"	92	148	45	50,8		280	4000
CS2020FL67	32	20	1 1/4"	20	1 1/4"	111	178	52	50,8		280	4000
CS2024FL67	32	20	1 1/4"	24	1 1/2"	111	178	52	60,4		210	3000
CS2424FL67	38	24	1 1/2"	24	1 1/2"	133	216	60	60,4		210	3000
CS2432FL67	38	24	1 1/2"	32	2"	132	215	58	71,4		210	3000
CS3232FL67	51	32	2"	32	2"	181	278	84	71,4		210	3000

**ISO12151/3  
SAE J516**

**SFL100**

**100° FLANGE ELBOW - ISO "L" SERIES - SAE CODE 61**  
FLANGIA 100° - ISO SERIE "L" - SAE CODICE 61

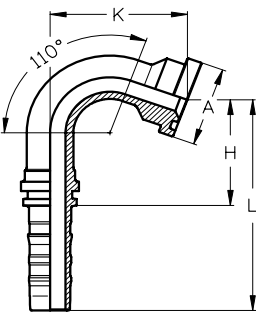


TIEFFE Part.N.	Hose I.D. Ø interno tubo			Flange Flangia		Dimensions (mm)				Maximum W.P.	
	DN	Size	Inch	Size	Inch	H	L	K	A	bar	PSI
<b>CS1212FL100</b>	20	12	3/4"	12	3/4"	61	112	59	38,1	350	5000
<b>CS1616FL100</b>	25	16	1"	16	1"	77	134	68	44,5	350	5000

**ISO12151/3  
SAE J516**

**SFL110**

**110° FLANGE ELBOW - ISO "L" SERIES - SAE CODE 61**  
FLANGIA 110° - ISO SERIE "L" - SAE CODICE 61

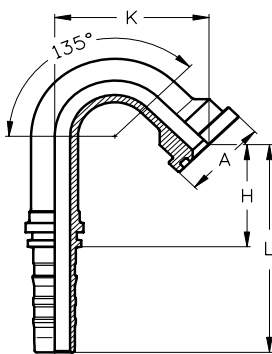


TIEFFE Part.N.	Hose I.D. Ø interno tubo			Flange Flangia		Dimensions (mm)				Maximum W.P.	
	DN	Size	Inch	Size	Inch	H	L	K	A	bar	PSI
<b>CS1212FL110</b>	20	12	3/4"	12	3/4"	51	102	62	38,1	350	5000
<b>CS1616FL110</b>	25	16	1"	16	1"	65	121	73	44,5	350	5000
<b>CS1620FL110</b>	25	16	1"	20	1 1/4"	65	121	73	50,8	280	4000
<b>CS2020FL110</b>	32	20	1 1/4"	20	1 1/4"	82	148	83	50,8	280	4000
<b>CS2024FL110</b>	32	20	1 1/4"	24	1 1/2"	82	148	83	60,4	210	3000
<b>CS2424FL110</b>	38	24	1 1/2"	24	1 1/2"	95	178	97	60,4	210	3000
<b>CS3232FL110</b>	51	32	2"	32	2"	124	220	142	71,4	210	3000

**ISO12151/3  
SAE J516**

**SFL135**

**135° FLANGE ELBOW - ISO "L" SERIES - SAE CODE 61**  
FLANGIA 135° - ISO SERIE "L" - SAE CODICE 61

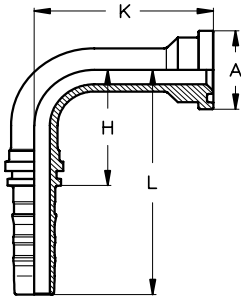


TIEFFE Part.N.	Hose I.D. Ø interno tubo			Flange Flangia		Dimensions (mm)				Maximum W.P.	
	DN	Size	Inch	Size	Inch	H	L	K	A	bar	PSI
<b>CS1212FL135</b>	20	12	3/4"	12	3/4"	69	120	70	38,1	350	5000
<b>CS1216FL135</b>	20	12	3/4"	16	1"	69	120	70	44,5	350	5000
<b>CS1616FL135</b>	25	16	1"	16	1"	57	113	86	44,5	350	5000

ISO12151/3  
 SAE J516

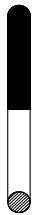
**SFL90**

**90° LONG DROP FLANGE ELBOW - ISO "L" SERIES - SAE CODE 61**  
*FLANGIA 90° INGOMBRO SPECIALE - ISO SERIE "L" - SAE CODICE 61*



TIEFFE Part.N.	Hose I.D. Ø interno tubo			Flange Flangia		Dimensions (mm)					Maximum W.P.	
	DN	Size	Inch	Size	Inch	H	L	K	A		bar	PSI
CS1212FL90-K96	20	12	3/4"	12	3/4"	55	106	96	38,1		350	5000
CS1212FL90-K127	20	12	3/4"	12	3/4"	55	106	127	38,1		350	5000
CS1216FL90-K79	20	12	3/4"	16	1"	55	106	79	44,5		350	5000
CS1616FL90-K118	25	16	1"	16	1"	71	128	118	44,5		350	5000
CS1620FL90-K118	25	16	1"	20	1 1/4"	71	128	118	50,8		280	4000
CS2020FL90-K91	32	20	1 1/4"	20	1 1/4"	87	154	91	50,8		280	4000
CS2020FL90-K102	32	20	1 1/4"	20	1 1/4"	87	154	102	50,8		280	4000
CS2020FL90-K112	32	20	1 1/4"	20	1 1/4"	87	154	112	50,8		280	4000
CS2020FL90-K130	32	20	1 1/4"	20	1 1/4"	87	154	130	50,8		280	4000
CS2020FL90-K168	32	20	1 1/4"	20	1 1/4"	87	154	168	50,8		280	4000
CS2024FL90-K118	32	20	1 1/4"	24	1 1/2"	87	154	118	60,4		210	3000
CS2024FL90-K130	32	20	1 1/4"	24	1 1/2"	87	154	130	60,4		210	3000
CS2424FL90-K148	38	24	1 1/2"	24	1 1/2"	105	188	148	60,4		210	3000
CS2424FL90-K172	38	24	1 1/2"	24	1 1/2"	105	188	172	60,4		210	3000
CS2432FL90-K115	38	24	1 1/2"	32	2"	105	188	115	71,4		210	3000
CS2432FL90-K172	38	24	1 1/2"	32	2"	105	188	172	71,4		210	3000
CS3232FL90-K165	51	32	2"	32	2"	140	237	165	71,4		210	3000
CS3232FL90-K203	51	32	2"	32	2"	140	237	203	71,4		210	3000

**O'RING SEAL FOR ISO "L" SERIES - SAE CODE 61 FLANGES**  
*GUARNIZIONI D'RING PER FLANGE ISO SERIE "L" - SAE CODICE 61*



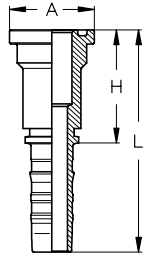
TIEFFE Part.N.	Flange Flangia		Dimensions (mm)	
	Size	Inch	ISO 3601-1	SAE
OR25x3,55	12	3/4"	25x3,55	24,99x3,53
OR32,5x3,55	16	1"	32,5x3,55	32,92x3,53
OR37,5x3,55	20	1 1/4"	37,5x3,55	37,69x3,53
OR47,5x3,55	24	1 1/2"	47,5x3,55	47,22x3,53
OR56x3,55	32	2"	56x3,55	56,74x3,53



ISO12151/3  
SAE J516

**SFS**

**STRAIGHT FLANGE - ISO "S" SERIES - SAE CODE 62**  
FLANGIA DIRITTA - ISO SERIE "S" - SAE CODICE 62

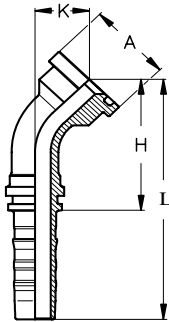


TIEFFE Part.N.	Hose I.D. Ø interno tubo			Flange Flangia		Dimensions (mm)					Maximum W.P.	
	DN	Size	Inch	Size	Inch	H	L	A			bar	PSI
CS1212FP	20	12	3/4"	12	3/4"	59	110	41,3			420	6000
CS1216FP	20	12	3/4"	16	1"	61	112	47,6			420	6000
CS1612FP	25	16	1"	12	3/4"	65	121,5	41,3			420	6000
CS1616FP	25	16	1"	16	1"	65	121,5	47,6			420	6000
CS1620FP	25	16	1"	20	1 1/4"	69	125,5	54			420	6000
CS2016FP	32	20	1 1/4"	16	1"	70	136,5	47,6			420	6000
CS2020FP	32	20	1 1/4"	20	1 1/4"	70	136,5	54			420	6000
CS2024FP	32	20	1 1/4"	24	1 1/2"	80	146,5	63,5			420	6000
CS2424FP	38	24	1 1/2"	24	1 1/2"	84	116,5	63,5			420	6000
CS2432FP	38	24	1 1/2"	32	2"	99	181,5	79,4			420	6000
CS3232FP	51	32	2"	32	2"	100	196,5	79,4			350	5000

ISO12151/3  
SAE J516

**SFS45**

**45° FLANGE ELBOW - ISO "S" SERIES - SAE CODE 62**  
FLANGIA 45° - ISO SERIE "S" - SAE CODICE 62

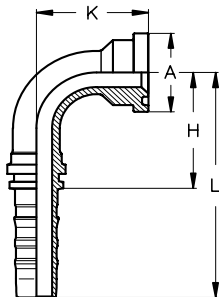


TIEFFE Part.N.	Hose I.D. Ø interno tubo			Flange Flangia		Dimensions (mm)					Maximum W.P.	
	DN	Size	Inch	Size	Inch	H	L	K	A		bar	PSI
CS1212FP45	20	12	3/4"	12	3/4"	66	117	28	41,3		420	6000
CS1216FP45	20	12	3/4"	16	1"	68	118	29	47,6		420	6000
CS1612FP45	25	16	1"	12	3/4"	81	137	31	41,3		420	6000
CS1616FP45	25	16	1"	16	1"	80	136	30	47,6		420	6000
CS1620FP45	25	16	1"	20	1 1/4"	80	136	30	54		420	6000
CS2016FP45	32	20	1 1/4"	16	1"	96	163	37	47,6		420	6000
CS2020FP45	32	20	1 1/4"	20	1 1/4"	93	160	34	54		420	6000
CS2024FP45	32	20	1 1/4"	24	1 1/2"	94	161	35	63,5		420	6000
CS2424FP45	38	24	1 1/2"	24	1 1/2"	112	195	40	63,5		420	6000
CS2432FP45	38	24	1 1/2"	32	2"	115	198	43	79,4		420	6000
CS3232FP45	51	32	2"	32	2"	150	247	56	79,4		350	5000

ISO12151/3  
SAE J516

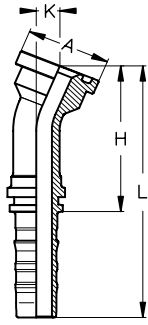
**SFS90**

**90° FLANGE ELBOW - ISO "S" SERIES - SAE CODE 62**  
FLANGIA 90° - ISO SERIE "S" - SAE CODICE 62



TIEFFE Part.N.	Hose I.D. Ø interno tubo			Flange Flangia		Dimensions (mm)					Maximum W.P.	
	DN	Size	Inch	Size	Inch	H	L	K	A		bar	PSI
CS1212FP90	20	12	3/4"	12	3/4"	55	106	56	41,3		420	6000
CS1216FP90	20	12	3/4"	16	1"	55	106	58	47,6		420	6000
CS1612FP90	25	16	1"	12	3/4"	71	128	65	41,3		420	6000
CS1616FP90	25	16	1"	16	1"	71	128	64	47,6		420	6000
CS1620FP90	25	16	1"	20	1 1/4"	71	128	64	54		420	6000
CS2016FP90	32	20	1 1/4"	16	1"	87	154	79	47,6		420	6000
CS2020FP90	32	20	1 1/4"	20	1 1/4"	87	154	74	54		420	6000
CS2024FP90	32	20	1 1/4"	24	1 1/2"	87	154	76	63,5		420	6000
CS2424FP90	38	24	1 1/2"	24	1 1/2"	105	188	88	63,5		420	6000
CS2432FP90	38	24	1 1/2"	32	2"	105	188	93	79,4		420	6000
CS3232FP90	51	32	2"	32	2"	140	237	123	79,4		350	5000

**ISO12151/3  
 SAE J516**

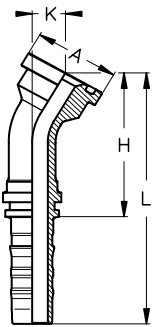


**SFS22,5**

**22,5° FLANGE ELBOW - ISO "S" SERIES - SAE CODE 62**  
*FLANGIA 22,5° - ISO SERIE "S" - SAE CODICE 62*

TIEFFE Part.N.	Hose I.D. Ø interno tubo			Flange Flangia		Dimensions (mm)				Maximum W.P.	
	DN	Size	Inch	Size	Inch	H	L	K	A	bar	PSI
CS1212FP22	20	12	3/4"	12	3/4"	74	125	13	41,3	420	6000
CS1216FP22	20	12	3/4"	16	1"	76	127	14	47,6	420	6000
CS1616FP22	25	16	1"	16	1"	89	145	13	47,6	420	6000
CS1620FP22	25	16	1"	20	1 1/4"	89	145	13	54	420	6000
CS2020FP22	32	20	1 1/4"	20	1 1/4"	103	169	15	54	420	6000
CS2024FP22	32	20	1 1/4"	24	1 1/2"	104	171	15	63,5	420	6000
CS2424FP22	38	24	1 1/2"	24	1 1/2"	123	206	17	63,5	420	6000
CS2432FP22	38	24	1 1/2"	32	2"	127	210	19	79,4	420	6000
CS3232FP22	51	32	2"	32	2"	166	263	24	79,4	350	5000

**ISO12151/3  
 SAE J516**

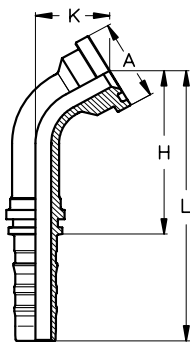


**SFS30**

**30° FLANGE ELBOW - ISO "S" SERIES - SAE CODE 62**  
*FLANGIA 30° - ISO SERIE "S" - SAE CODICE 62*

TIEFFE Part.N.	Hose I.D. Ø interno tubo			Flange Flangia		Dimensions (mm)				Maximum W.P.	
	DN	Size	Inch	Size	Inch	H	L	K	A	bar	PSI
CS1212FP30	20	12	3/4"	12	3/4"	72	123	18	41,3	420	6000
CS1216FP30	20	12	3/4"	16	1"	74	125	19	47,6	420	6000
CS1616FP30	25	16	1"	16	1"	87	143	19	47,6	420	6000
CS1620FP30	25	16	1"	20	1 1/4"	87	143	19	54	420	6000
CS2020FP30	32	20	1 1/4"	20	1 1/4"	100	167	20	54	420	6000
CS2024FP30	32	20	1 1/4"	24	1 1/2"	102	168	21	63,5	420	6000
CS2424FP30	38	24	1 1/2"	24	1 1/2"	121	203	24	63,5	420	6000
CS2432FP30	38	24	1 1/2"	32	2"	124	207	26	79,4	420	6000
CS3232FP30	51	32	2"	32	2"	162	259	34	79,4	350	5000

**ISO12151/3  
 SAE J516**

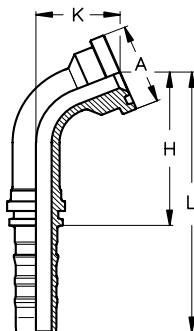


**SFS60**

**60° FLANGE ELBOW - ISO "S" SERIES - SAE CODE 62**  
*FLANGIA 60° - ISO SERIE "S" - SAE CODICE 62*

TIEFFE Part.N.	Hose I.D. Ø interno tubo			Flange Flangia		Dimensions (mm)				Maximum W.P.	
	DN	Size	Inch	Size	Inch	H	L	K	A	bar	PSI
CS1212FP60	20	12	3/4"	12	3/4"	79	130	38	41,3	420	6000
CS1216FP60	20	12	3/4"	16	1"	80	131	40	47,6	420	6000
CS1616FP60	25	16	1"	16	1"	99	155	42	47,6	420	6000
CS1620FP60	25	16	1"	20	1 1/4"	99	155	42	54	420	6000
CS2020FP60	32	20	1 1/4"	20	1 1/4"	119	185	47	54	420	6000
CS2024FP60	32	20	1 1/4"	24	1 1/2"	120	186	49	63,5	420	6000
CS2424FP60	38	24	1 1/2"	24	1 1/2"	143	225	56	63,5	420	6000
CS2432FP60	38	24	1 1/2"	32	2"	145	228	60	79,4	420	6000
CS3232FP60	51	32	2"	32	2"	193	289	79	79,4	350	5000

**ISO12151/3  
 SAE J516**



**SFS67,5**

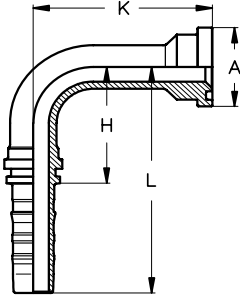
**67,5° FLANGE ELBOW - ISO "S" SERIES - SAE CODE 62**  
*FLANGIA 67,5° - ISO SERIE "S" - SAE CODICE 62*

TIEFFE Part.N.	Hose I.D. Ø interno tubo			Flange Flangia		Dimensions (mm)				Maximum W.P.	
	DN	Size	Inch	Size	Inch	H	L	K	A	bar	PSI
CS1212FP67	20	12	3/4"	12	3/4"	74	125	43	41,3	420	6000
CS1216FP67	20	12	3/4"	16	1"	75	126	45	47,6	420	6000
CS1616FP67	25	16	1"	16	1"	93	150	48	47,6	420	6000
CS1620FP67	25	16	1"	20	1 1/4"	93	150	48	54	420	6000
CS2020FP67	32	20	1 1/4"	20	1 1/4"	112	179	54	54	420	6000
CS2024FP67	32	20	1 1/4"	24	1 1/2"	113	180	56	63,5	420	6000
CS2424FP67	38	24	1 1/2"	24	1 1/2"	135	217	65	63,5	420	6000
CS2432FP67	38	24	1 1/2"	32	2"	137	219	69	79,4	420	6000
CS3232FP67	51	32	2"	32	2"	182	278	90	79,4	350	5000

**ISO12151/3  
 SAE J516**

**SFS90**

**90° LONG DROP FLANGE ELBOW - ISO "S" SERIES - SAE CODE 62**  
 FLANGIA 90° INGOMBRO SPECIALE - ISO SERIE "S" - SAE CODICE 62



TIEFFE Part.N.	Hose I.D. Ø interno tubo			Flange Flangia		Dimensions (mm)					Maximum W.P.	
	DN	Size	Inch	Size	Inch	H	L	K	A		bar	PSI
<b>CS1212FP90-K100</b>	20	12	3/4"	12	3/4"	55	106	100	41,3		420	6000
<b>CS1216FP90-K140</b>	20	12	3/4"	16	1"	55	106	140	47,6		420	6000
<b>CS1616FP90-K120</b>	25	16	1"	16	1"	71	128	120	47,6		420	6000
<b>CS2020FP90-K120</b>	32	20	1 1/4"	20	1 1/4"	87	154	120	54		420	6000

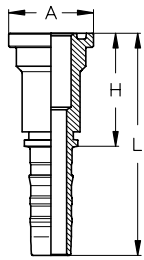
**O'RING SEAL FOR ISO "S" SERIES - SAE CODE 62 FLANGES**  
 GUARNIZIONI D'RING PER FLANGE ISO SERIE "S" - SAE CODICE 62



TIEFFE Part.N.	Flange Flangia		Dimensions (mm)	
	Size	Inch	ISO 3601-1	SAE
<b>OR25x3,55</b>	12	3/4"	25x3,55	24,99x3,53
<b>OR32,5x3,55</b>	16	1"	32,5x3,55	32,92x3,53
<b>OR37,5x3,55</b>	20	1 1/4"	37,5x3,55	37,69x3,53
<b>OR47,5x3,55</b>	24	1 1/2"	47,5x3,55	47,22x3,53
<b>OR56x3,55</b>	32	2"	56x3,55	56,74x3,53

**SFS<sup>UPERCAT</sup>**

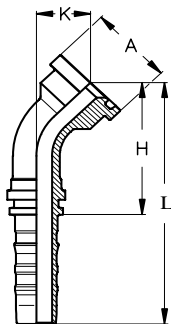
**"SUPERCAT" STRAIGHT FLANGE**  
FLANGIA "SUPERCAT" - DIRITTA



TIEFFE Part.N.	Hose I.D. Ø interno tubo			Flange Flangia		Dimensions (mm)					Maximum W.P.	
	DN	Size	Inch	Size	Inch	H	L	A		D'RING	bar	PSI
CS1212YP	20	12	3/4"	12	3/4"	84	135	41,3		DR12	420	6000
CS1216YP	20	12	3/4"	16	1"	84	135	47,6		DR16	420	6000
CS1616YP	25	16	1"	16	1"	90	146,5	47,6		DR16	420	6000
CS1620YP	25	16	1"	20	1 1/4"	90	146,5	54		DR20	420	6000
CS2020YP	32	20	1 1/4"	20	1 1/4"	88	154,4	54		DR20	420	6000
CS2024YP	32	20	1 1/4"	24	1 1/2"	88	154,5	63,5		DR24	420	6000
CS2424YP	38	24	1 1/2"	24	1 1/2"	84	166,5	63,5		DR24	420	6000
CS2432YP	38	24	1 1/2"	32	2"	110	192,5	79,4		DR32	420	6000
CS3232YP	51	32	2"	32	2"	130	226,5	79,4		DR32	350	5000

**SFS<sup>UPERCAT45</sup>**

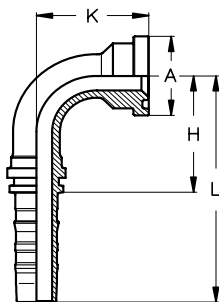
**"SUPERCAT" 45° FLANGE ELBOW**  
FLANGIA "SUPERCAT" - CURVA 45°



TIEFFE Part.N.	Hose I.D. Ø interno tubo			Flange Flangia		Dimensions (mm)					Maximum W.P.	
	DN	Size	Inch	Size	Inch	H	L	K	A	D'RING	bar	PSI
CS1212YP45	20	12	3/4"	12	3/4"	72	123	34	41,3	DR12	420	6000
CS1216YP45	20	12	3/4"	16	1"	74	125	36	47,6	DR16	420	6000
CS1616YP45	25	16	1"	16	1"	86	143	36	47,6	DR16	420	6000
CS1620YP45	25	16	1"	20	1 1/4"	86	143	36	54	DR20	420	6000
CS2020YP45	32	20	1 1/4"	20	1 1/4"	96	162	36	54	DR20	420	6000
CS2024YP45	32	20	1 1/4"	24	1 1/2"	96	162	36	63,5	DR24	420	6000
CS2424YP45	38	24	1 1/2"	24	1 1/2"	114	196	41	63,5	DR24	420	6000
CS2432YP45	38	24	1 1/2"	32	2"	116	199	44	79,4	DR32	420	6000
CS3232YP45	51	32	2"	32	2"	152	250	57	79,4	DR32	350	5000

**SFS<sup>UPERCAT90</sup>**

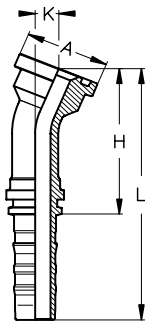
**"SUPERCAT" 90° FLANGE ELBOW**  
FLANGIA "SUPERCAT" - CURVA 90°



TIEFFE Part.N.	Hose I.D. Ø interno tubo			Flange Flangia		Dimensions (mm)					Maximum W.P.	
	DN	Size	Inch	Size	Inch	H	L	K	A	D'RING	bar	PSI
CS1212YP90	20	12	3/4"	12	3/4"	55	106	64	41,3	DR12	420	6000
CS1216YP90	20	12	3/4"	16	1"	55	106	64	47,6	DR16	420	6000
CS1616YP90	25	16	1"	16	1"	71	128	73	47,6	DR16	420	6000
CS1620YP90	25	16	1"	20	1 1/4"	71	128	73	54	DR20	420	6000
CS2020YP90	32	20	1 1/4"	20	1 1/4"	87	154	77	54	DR20	420	6000
CS2024YP90	32	20	1 1/4"	24	1 1/2"	87	154	78	63,5	DR24	420	6000
CS2424YP90	38	24	1 1/2"	24	1 1/2"	105	188	90	63,5	DR24	420	6000
CS2432YP90	38	24	1 1/2"	32	2"	105	188	94	79,4	DR32	420	6000
CS3232YP90	51	32	2"	32	2"	140	237	125	79,4	DR32	350	5000

### SFS<sup>UPERCAT</sup>22,5

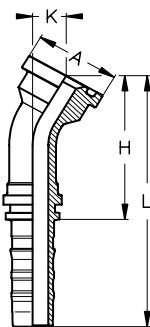
#### "SUPERCAT" 22,5° FLANGE ELBOW FLANGIA "SUPERCAT" - CURVA 22,5°



TIEFFE Part.N.	Hose I.D. Ø interno tubo			Flange Flangia		Dimensions (mm)					Maximum W.P.	
	DN	Size	Inch	Size	Inch	H	L	K	A	D'RING	bar	PSI
CS1212YP22	20	12	3/4"	12	3/4"	82	133	16	41,3	DR12	420	6000
CS1216YP22	20	12	3/4"	16	1"	84	135	17	47,6	DR16	420	6000
CS1616YP22	25	16	1"	16	1"	97	153	17	47,6	DR16	420	6000
CS1620YP22	25	16	1"	20	1 1/4"	97	153	17	54	DR20	420	6000
CS2020YP22	32	20	1 1/4"	20	1 1/4"	406	172	16	54	DR20	420	6000
CS2024YP22	32	20	1 1/4"	24	1 1/2"	406	174	16	63,5	DR24	420	6000
CS2424YP22	38	24	1 1/2"	24	1 1/2"	125	208	18	63,5	DR24	420	6000
CS2432YP22	38	24	1 1/2"	32	2"	129	211	19	79,4	DR32	420	6000
CS3232YP22	51	32	2"	32	2"	168	265	25	79,4	DR32	350	5000

### SFS<sup>UPERCAT</sup>30

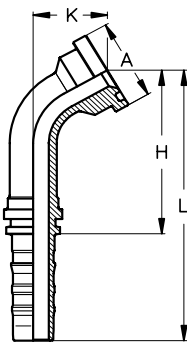
#### "SUPERCAT" 30° FLANGE ELBOW FLANGIA "SUPERCAT" - CURVA 30°



TIEFFE Part.N.	Hose I.D. Ø interno tubo			Flange Flangia		Dimensions (mm)					Maximum W.P.	
	DN	Size	Inch	Size	Inch	H	L	K	A	D'RING	bar	PSI
CS1212YP30	20	12	3/4"	12	3/4"	79	130	22	41,3	DR12	420	6000
CS1216YP30	20	12	3/4"	16	1"	82	133	23	47,6	DR16	420	6000
CS1616YP30	25	16	1"	16	1"	94	151	23	47,6	DR16	420	6000
CS1620YP30	25	16	1"	20	1 1/4"	94	151	23	54	DR20	420	6000
CS2020YP30	32	20	1 1/4"	20	1 1/4"	103	170	22	54	DR20	420	6000
CS2024YP30	32	20	1 1/4"	24	1 1/2"	104	170	23	63,5	DR24	420	6000
CS2424YP30	38	24	1 1/2"	24	1 1/2"	123	205	25	63,5	DR24	420	6000
CS2432YP30	38	24	1 1/2"	32	2"	126	208	27	79,4	DR32	420	6000
CS3232YP30	51	32	2"	32	2"	164	264	35	79,4	DR32	350	5000

### SFS<sup>UPERCAT</sup>60

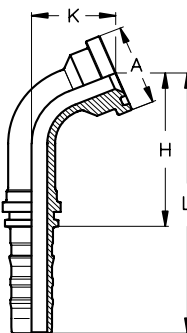
#### "SUPERCAT" 60° FLANGE ELBOW FLANGIA "SUPERCAT" - CURVA 60°



TIEFFE Part.N.	Hose I.D. Ø interno tubo			Flange Flangia		Dimensions (mm)					Maximum W.P.	
	DN	Size	Inch	Size	Inch	H	L	K	A	D'RING	bar	PSI
CS1212YP60	20	12	3/4"	12	3/4"	83	134	45	41,3	DR12	420	6000
CS1216YP60	20	12	3/4"	16	1"	85	136	48	47,6	DR16	420	6000
CS1616YP60	25	16	1"	16	1"	103	160	50	47,6	DR16	420	6000
CS1620YP60	25	16	1"	20	1 1/4"	103	160	50	54	DR20	420	6000
CS2020YP60	32	20	1 1/4"	20	1 1/4"	121	187	50	54	DR20	420	6000
CS2024YP60	32	20	1 1/4"	24	1 1/2"	121	187	51	63,5	DR24	420	6000
CS2424YP60	38	24	1 1/2"	24	1 1/2"	144	226	58	63,5	DR24	420	6000
CS2432YP60	38	24	1 1/2"	32	2"	146	228	61	79,4	DR32	420	6000
CS3232YP60	51	32	2"	32	2"	194	290	81	79,4	DR32	350	5000

### SFS<sup>UPERCAT</sup>67,5

#### "SUPERCAT" 67,5° FLANGE ELBOW FLANGIA "SUPERCAT" - CURVA 67,5°

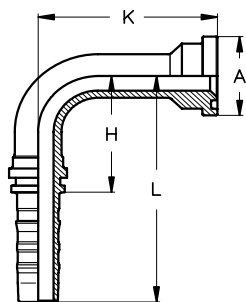


TIEFFE Part.N.	Hose I.D. Ø interno tubo			Flange Flangia		Dimensions (mm)					Maximum W.P.	
	DN	Size	Inch	Size	Inch	H	L	K	A	D'RING	bar	PSI
CS1212YP67	20	12	3/4"	12	3/4"	77	128	50	41,3	DR12	420	6000
CS1216YP67	20	12	3/4"	16	1"	79	130	53	47,6	DR16	420	6000
CS1616YP67	25	16	1"	16	1"	97	153	56	47,6	DR16	420	6000
CS1620YP67	25	16	1"	20	1 1/4"	97	153	56	54	DR20	420	6000
CS2020YP67	32	20	1 1/4"	20	1 1/4"	114	181	57	54	DR20	420	6000
CS2024YP67	32	20	1 1/4"	24	1 1/2"	114	181	58	63,5	DR24	420	6000
CS2424YP67	38	24	1 1/2"	24	1 1/2"	137	219	66	63,5	DR24	420	6000
CS2432YP67	38	24	1 1/2"	32	2"	138	220	69	79,4	DR32	420	6000
CS3232YP67	51	32	2"	32	2"	184	280	92	79,4	DR32	350	5000



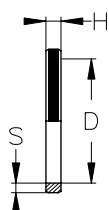
**SFS<sup>UPERCAT</sup> 90**

**"SUPERCAT" 90° LONG DROP FLANGE ELBOW**  
FLANGIA "SUPERCAT" - CURVA 90° - INGOMBRO SPECIALE



TIEFFE Part.N.	Hose I.D. Ø interno tubo			Flange Flangia		Dimensions (mm)					Maximum W.P.	
	DN	Size	Inch	Size	Inch	H	L	K	A	D'RING	bar	PSI
<b>CS1212YP90-K129</b>	20	12	3/4"	12	3/4"	55	106	129	41,3	DR12	420	6000
<b>CS1616YP90-K132</b>	25	16	1"	16	1"	71	128	132	47,6	DR16	420	6000
<b>CS1616YP90-K150</b>	25	16	1"	16	1"	71	128	150	47,6	DR16	420	6000
<b>CS2020YP90-K150</b>	32	20	1 1/4"	20	1 1/4"	87	154	150	54	DR20	420	6000
<b>CS2024YP90-K135</b>	32	20	1 1/4"	24	1 1/2"	87	154	135	63,5	DR24	420	6000
<b>CS2424YP90-K106</b>	38	24	1 1/2"	24	1 1/2"	105	188	106	63,5	DR24	420	6000

**D'RING SEAL FOR "SUPERCAT" FLANGES**  
GUARNIZIONI D'RING PER FLANGE "SUPERCAT"



TIEFFE Part.N.	Flange Flangia		Dimensions (mm)		
	Size	Inch	D	H	S
<b>DR12</b>	12	3/4"	25,4	5	3,5
<b>DR16</b>	16	1"	31,8	5	3,5
<b>DR20</b>	20	1 1/4"	38,1	5	3,5
<b>DR24</b>	24	1 1/2"	44,5	5	3,5
<b>DR32</b>	32	2"	63,9	5	3,5

**FEMALE SWIVEL ENDS TORQUE VALUES**  
 COPPIE DI SERRAGGIO FEMMINE GIREVOLI

SWIVEL END THREAD FILETTO FEMMINA GIREVOLE		TIEFFE DASH SIZE		NUT EXAGON ESAGONO DADO		TORQUE VALUE (Nm) COPPIA DI SERRAGGIO (Nm)	
				mm		Nominal	Min. - Max.
BSPP (GAS)	3/4"-14	12	FGO	32		115	95-135
BSPP (GAS)	1"-11	16	FGO	41		140	115-165
BSPP (GAS)	1 1/4"-11	20	FGO	50		210	140-280
BSPP (GAS)	1 1/2"-11	24	FGO	60		290	215-365
BSPP (GAS)	2"-11	32	FGO	75		400	300-500
J.I.C.	7/8"-14	10	FIC-FIS	27		69	44-94
J.I.C.	1 1/16"-12	12	FIC-FIS	32		98	63-133
J.I.C.	1 3/16"-12	14	FIC-FIS	36		118	73-163
J.I.C.	1 5/16"-12	16	FIC-FIS	41		140	90-190
J.I.C.	1 5/8"-12	20	FIC-FIS	50		210	135-285
J.I.C.	1 7/8"-12	24	FIC-FIS	60		290	215-365
J.I.C.	2 1/2"-12	32	FIC-FIS	75		400	300-500
ORFS	1 3/16"-12	12	FRC-FRS	36		90	95 max
ORFS	1 7/16"-12	16	FRC-FRS	41		125	135 max
ORFS	1 11/16"-12	20	FRC-FRS	50		170	190 max
ORFS	2"-12	24	FRC-FRS	60		200	225 max
METRIC	30x2	20S	FOS	36		135	115-155
METRIC	36x2	25S	FOS	46		166	140-192
METRIC	42x2	30S	FOS	50		240	210-270
METRIC	52x2	38S	FOS	60		330	280-380

**HOSE ASSEMBLING PROCEDURE - BY CHECKING INSERT  
BORE COLLAPSE**

- 1- Select the specified hose (A), ferrules (B) and inserts (C) listed in the latest release of TIEFFE hose connectors catalogue. (See Figure 1)

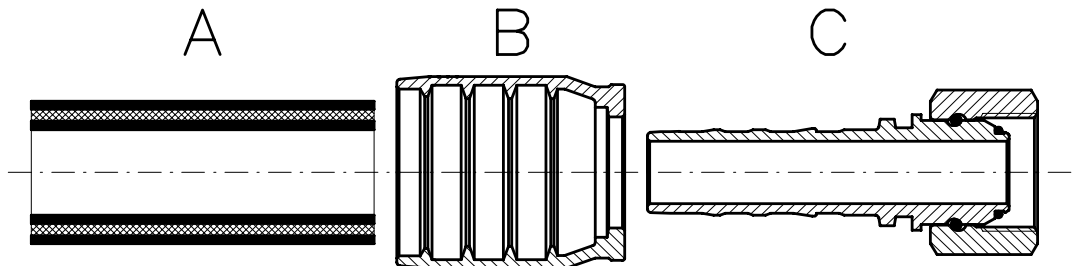


Figure 1

- 2- Cut the hose squarely using a rotary steel blade (non abrasive) to the required length.
- 3- **If skiving is required**, remove all rubber cover to the "skiving length" specified in the ASSEMBLING DATA TABLE avoiding damages to the steel wires reinforcement.
- 4- Place the ferrule fully onto the hose. Push the insert fully into the hose. Select the "COLLAPSE CONTROL MANDREL" for size and series of TIEFFE inserts. Insert the MANDREL into the insert bore. The "NO GO" part of the MANDREL must fully go into the insert bore. (See Figure 2). Remove the MANDREL.

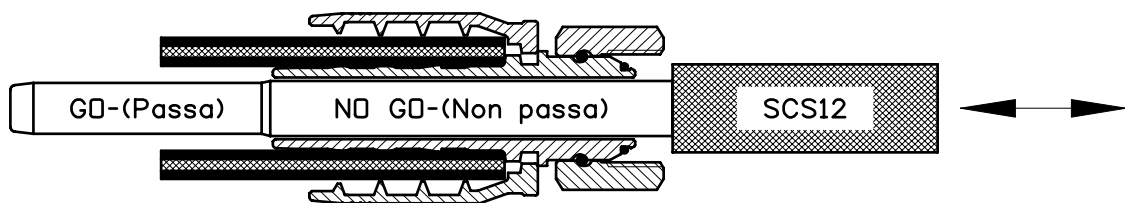


Figure 2

- 5- Crimp the ferrule to the diameter specified in the table ASSEMBLING DATA TABLE.
- 6- Inspect the crimp diameter by measuring it on each die impressions. All measurements must be taken in the center of ferrule length. All measurements must be according to the specified crimp diameters, within a tolerance +0,0/-0,2 mm.
- 7- Insert the "COLLAPSE CONTROL MANDREL".

**PROCEDURA DI ASSEMBLAGGIO TUBI FLESSIBILI -  
METODO DI CONTROLLO DEL COLLASSO FORO**

- 1- Selezionare il tubo flex. (A), le boccole (B) e gli inserti (C) elencati nell'ultima edizione del catalogo TIEFFE. (vedi Figura 1)

Figura 1

- 2- Tagliare il tubo flex. alla lunghezza richiesta, usando una lama rotante di acciaio (non abrasiva).
- 3- **Se è richiesta la spellatura esterna**, asportare più gomma della copertura possibile, fino alla "lunghezza di spellatura" specificata nella tabella DATI ASSEMBLAGGIO evitando di danneggiare i fili di acciaio del rinforzo.
- 4- Poizionare la boccola sul tubo flex. Inserire l'inserto nel tubo flex. Selezionare la "SPINA di CONTROLLO COLLASSO" per misura e SERIE dei raccordi TIEFFE. Inserire la SPINA nel foro dell'inserto. La parte "Non Passa" deve entrare completamente nel foro dell'inserto. (Vedi Figura 2). Rimuovere la SPINA.

Figura 2

- 5- Pressare la boccola al diametro di pressatura specificato nella tabella DATI ASSEMBLAGGIO.
- 6- Controllare il diametro di pressatura misurandolo su ogni coppia di morsetti. Le misure vanno prese al centro della lunghezza della boccola. Tutte le misure prese devono essere in accordo con il diametro di pressatura specificato (+0,0/-0,2 mm.).
- 7- Inserire la "SPINA di CONTROLLO COLLASSO".

8- **If the "NO GO" part of the MANDREL stops in the bore as shown in Figure 3**, crimp diameter and bore collapse are correct.

9- **If the "NO GO" part of the MANDREL goes through the bore**, the crimp diameter must be reduced by increments of 0,1 mm to reach the condition shown in Figure 3.

10- **If the "GO" part of the MANDREL does not go through the bore**, the crimp diameter must be increased (step by step) to reach the condition shown in Figure 3.

8- **Se la parte "Non passa" della "SPINA di CONTROLLO COLLASSO" si blocca nel foro, come evidenziato in Figura 3**, il diametro di pressatura ed il collasso del foro sono corretti.

9 **Se la parte "Non passa" della "SPINA di CONTROLLO COLLASSO" entra completamente nel foro**, il diametro di pressatura deve essere ridotto, di decimo in decimo, fino al verificarsi delle condizioni evidenziate in Figura 3.

10 **Se la parte "Passa" della "SPINA di CONTROLLO non entra nel foro**, il diametro di pressatura deve essere aumentato, di decimo in decimo, fino al verificarsi delle condizioni evidenziate in Figura 3.

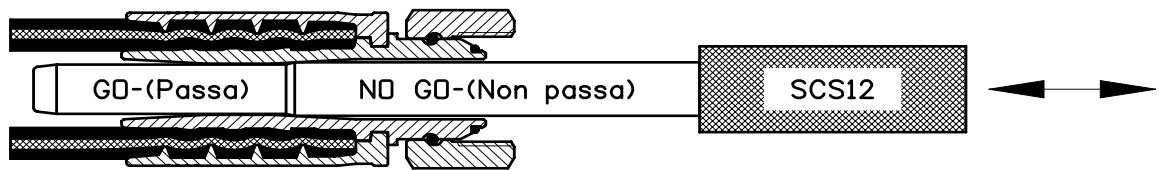


Figure 3

Figura 3

**"SCS" COLLAPSE CONTROL MANDREL dimensions**

Dimensioni SPINE DI CONTROLLO COLLASSO "SCS"

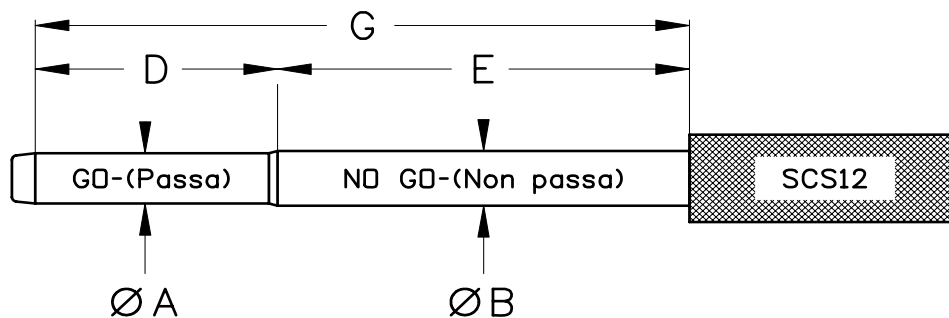
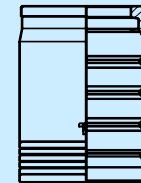
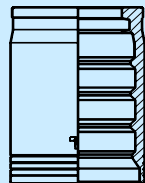


Figure 4

TIEFFE Part.N.	Hose I.D. Ø interno tubo			INSERT BORE COLLAPSE Collasso foro inserto (mm)		COLLAPSE CONTROL MANDREL dimensions (mm) Dimensioni SPINE DI CONTROLLO COLLASSO (mm)				
	DN	Size	Inch	minimum	maximum	ØA +0,00/-0,05	ØB +0,00/-0,05	D	E	G
SCS12	20	12	3/4"	0,70	1,40	12,60	13,30	55	115	170
SCS16	25	16	1"	0,80	1,60	17,4	18,2	60	130	190
SCS20	32	20	1 1/4"	0,90	1,80	22,7	23,6	70	150	220
SCS24	40	24	1 1/2"	1,00	2,00	28	29	85	185	270
SCS32	50	32	2"	1,20	2,40	37,6	38,8	100	230	330

SKIVE



BSS4

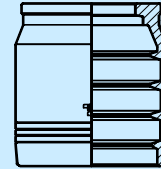
BSS6

SKIVE

Hose I.D. Ø Interno tubo			EN8564 SP			EN456 4SH			EN856 R12 SAE100 R12			EN856 R13 SAE100 R13			SAE100 R15			Collapse control mandrel Spina controllo collasso
			Ferrule Boccola	Skiving length Lung. di spellat.	Swaged diam. Diametro di press. (Ref.)	Ferrule Boccola	Skiving length Lung. di spellat.	Swaged diam. Diametro di press. (Ref.)	Ferrule Boccola	Skiving length Lung. di spellat.	Swaged diam. Diametro di press. (Ref.)	Ferrule Boccola	Skiving length Lung. di spellat.	Swaged diam. Diametro di press. (Ref.)	Ferrule Boccola	Skiving length Lung. di spellat.	Swaged diam. Diametro di press. (Ref.)	
DN	SIZE	Inch	Part. N.	mm	mm	Part. N.	mm	mm	Part. N.	mm	mm	Part. N.	mm	mm	Part. N.	mm	mm	Part. N.
19	12	3/4"	<b>BSS412</b>	41,5	32,5	<b>BSS412</b>	41,5	32,7	<b>BSS412</b>	41,5	32,1	<b>BSS412</b>	41,5	33,2	<b>BSS412</b>	41,5	33,2	SCS12
25	16	1"	<b>BSS416</b>	44,5	40,4	<b>BSS416</b>	44,5	40,3	<b>BSS416</b>	44,5	40,1	<b>BSS416</b>	44,5	40,8	<b>BSS416</b>	44,5	40,8	SCS16
31	20	1 1/4"	<b>BSS620</b>	53	50,7	<b>BSS420</b>	52,5	46,4	<b>BSS420</b>	52,5	48,0	<b>BSS620</b>	53	51,3	<b>BSS620</b>	53	51,3	SCS20
38	24	1 1/2"	<b>BSS624</b>	69	59,4	<b>BSS424</b>	68,5	57,4	<b>BSS424</b>	68,5	56,0	<b>BSS624</b>	69	60,8	<b>BSS624</b>	69	60,8	SCS24
51	32	2"	<b>BSS632</b>	78	73,6	<b>BSS432</b>	78	68,8	<b>BSS432</b>	78	69,1	<b>BSS632</b>	78	75,7				SCS32



**NON  
 SKIVE**



**NON SKIVE**

**BSN4**

Hose I.D. Ø Interno tubo			EN8564 SP			EN456 4SH			EN856 R12 SAE100 R12			EN856 R13 SAE100 R13			SAE100 R15			Collapse control mandrel Spina controllo collasso
			Ferrule Boccola		Swaged diam. Diametro di press. (Ref.)	Ferrule Boccola		Swaged diam. Diametro di press. (Ref.)	Ferrule Boccola		Swaged diam. Diametro di press. (Ref.)	Ferrule Boccola		Swaged diam. Diametro di press. (Ref.)	Ferrule Boccola		Swaged diam. Diametro di press. (Ref.)	
DN	SIZE	Inch	Part. N.		mm	Part. N.		mm	Part. N.		mm	Part. N.		mm	Part. N.		mm	Part. N.
19	12	3/4"	<b>BSN412</b>		35,9	<b>BSN412</b>		35,9	<b>BSN412</b>		34,6	<b>BSN412</b>		35,8	<b>BSN412</b>		35,8	SCS12
25	16	1"	<b>BSN416</b>		43,0	<b>BSN416</b>		42,1	<b>BSN416</b>		41,5	<b>BSN416</b>		42,2	<b>BSN416</b>		42,1	SCS16
31	20	1 1/4"				<b>BSN420</b>		50,6	<b>BSN420</b>		51,9							SCS20
38	24	1 1/2"				<b>BSN424</b>		60,0	<b>BSN424</b>		60,0							SCS24
51	32	2"				<b>BSN432</b>		73,8	<b>BSN432</b>		72,5							SCS32

